



TREND ANALYSIS HEALTH INDICATORS (2012-13 to 2017-18)



Source: DHIS Database

Sequence of Presentation:

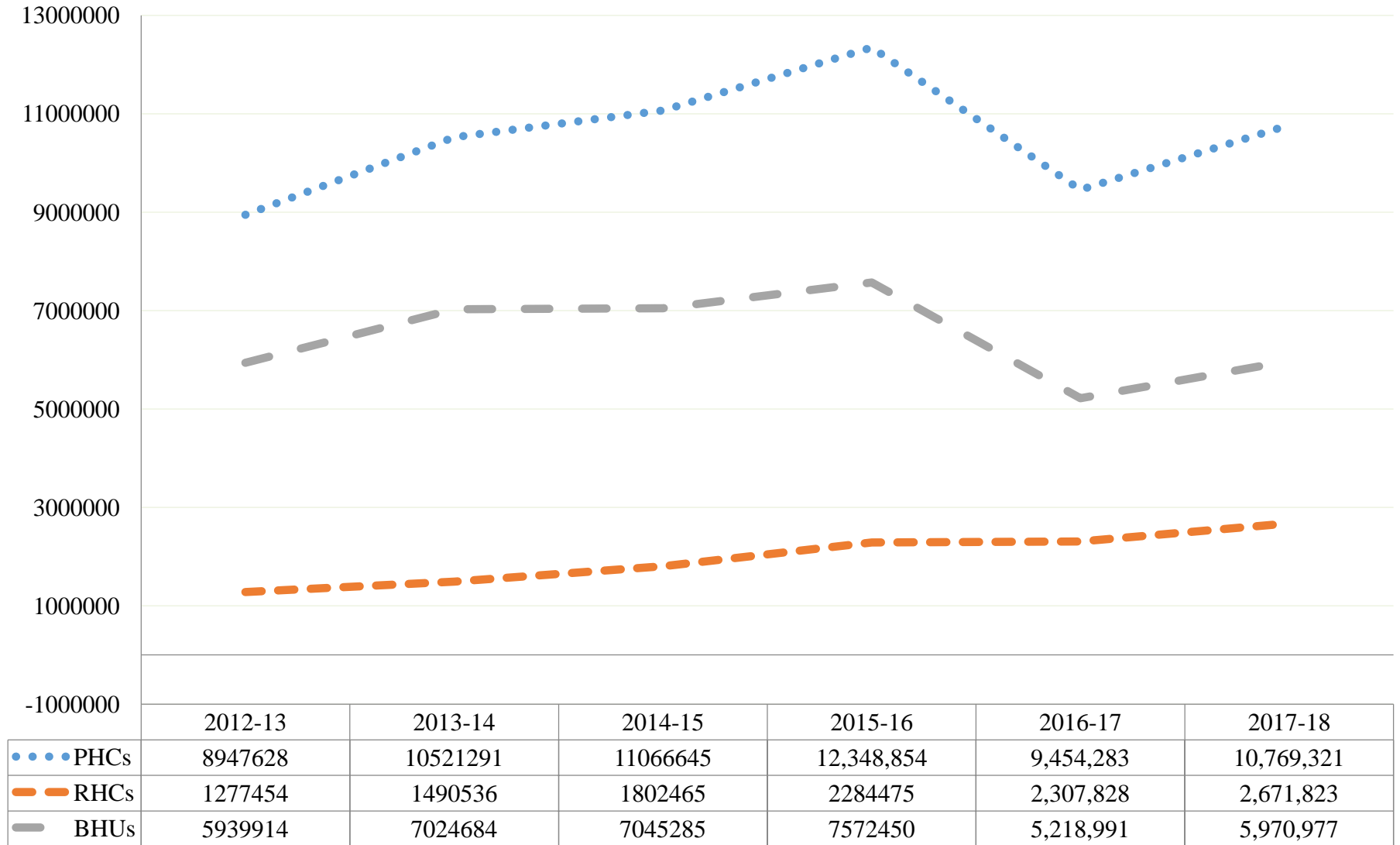
- OPD - Number of patients examined in Primary and Secondary Health Care level facilities. (PHC and SHC)
- Number of deliveries in PHC and SHC facilities
- Trend of Communicable diseases
- Trend of Non-Communicable diseases

Out Patients Department (OPD)
(Primary and Secondary Level Health Care Facilities)

Out Patients Department (Primary Level Health Care Facilities)

Interpretation:

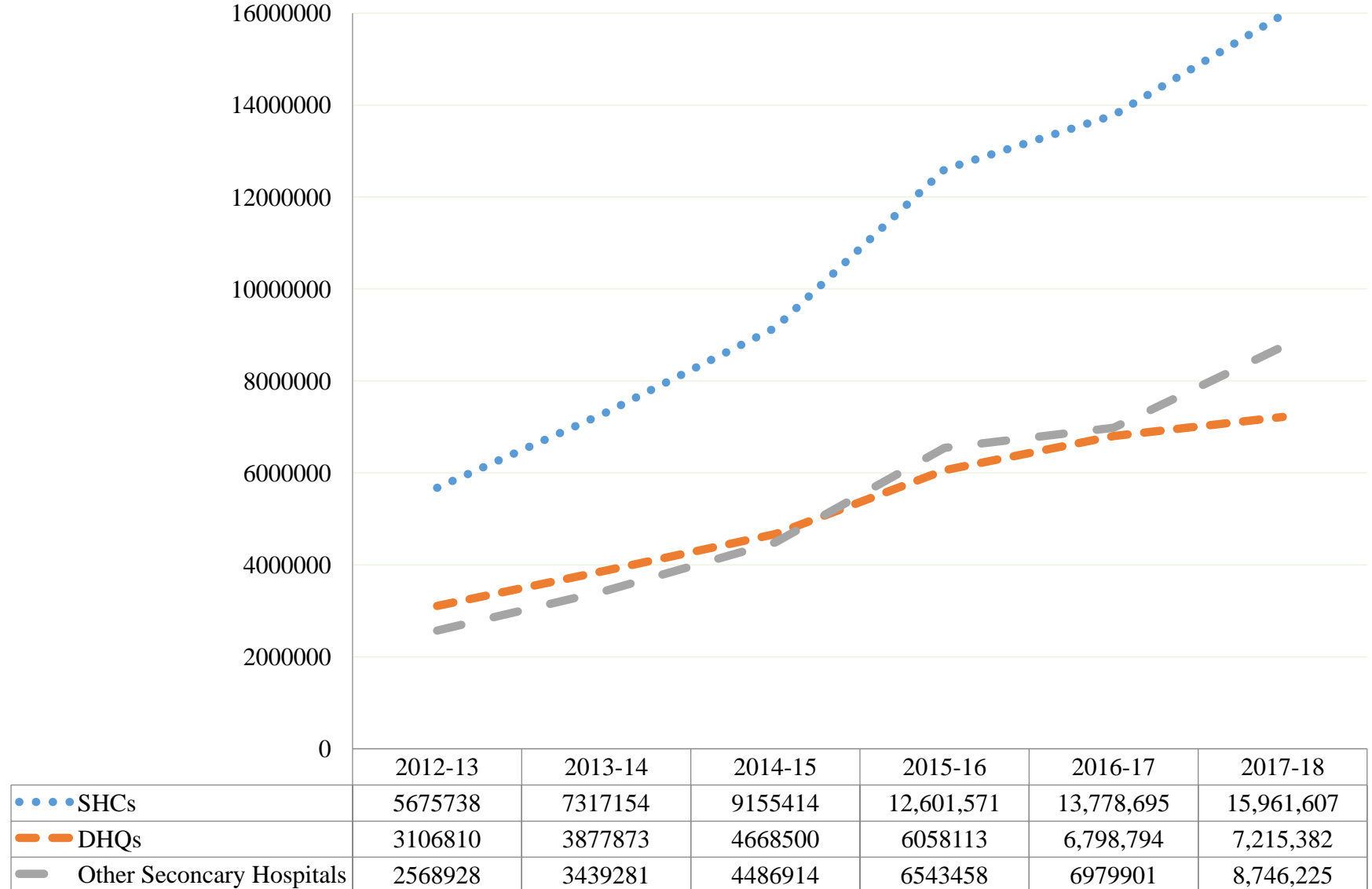
Number of patients examined in public health facilities have increased, Significantly, but there is a decrease in year 2016-17 and 2017-18 due DHQ Teaching/MTI Hospitals to not reporting .



Out Patients Department (Secondary Level Health Care Facilities)

Interpretation:

Number of patients examined in public health facilities have increased, Significantly every year, but in 2017-18 due to sufficient health care services the patients trust developed in the Public Hospitals.



Analysis

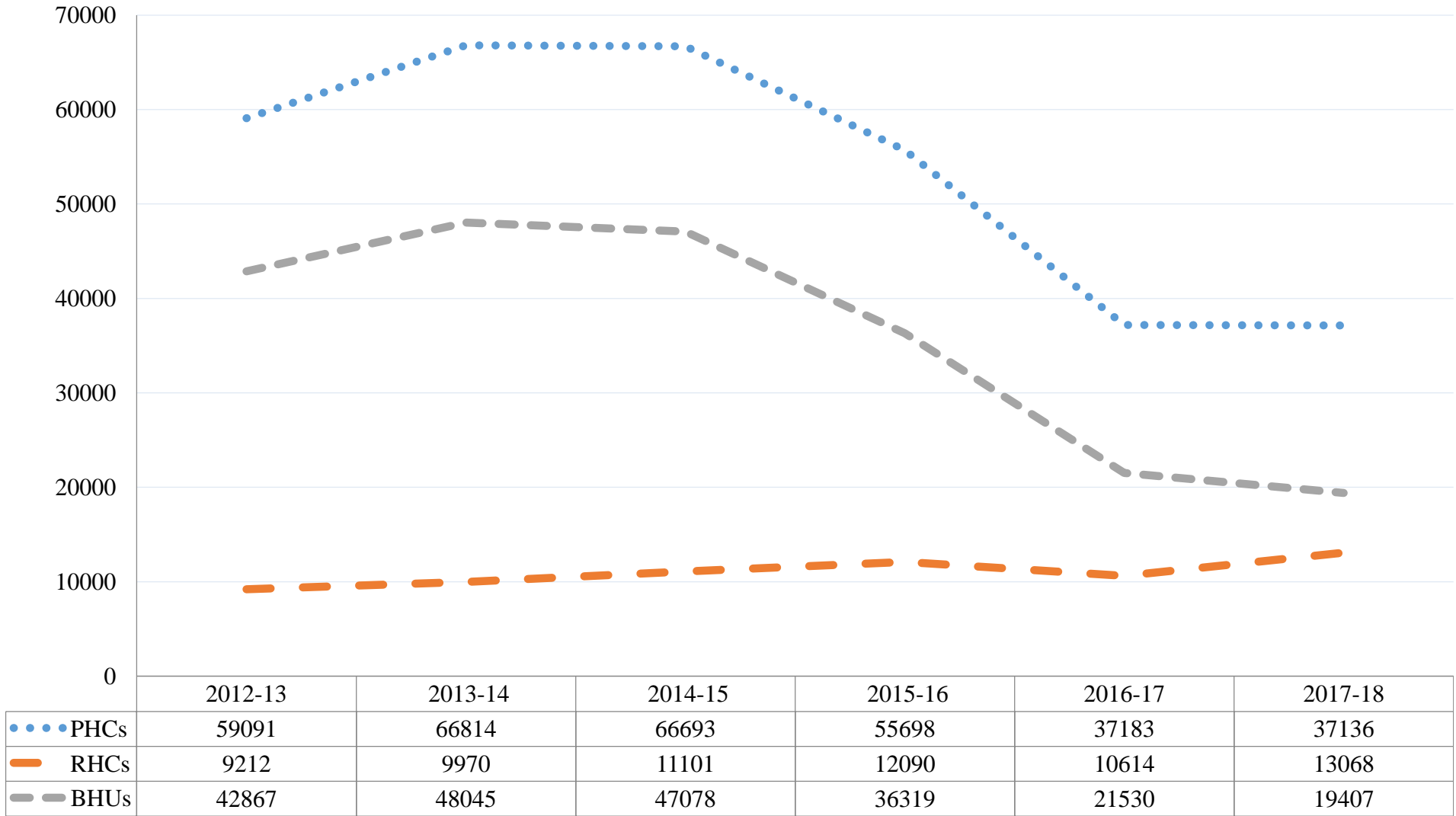
- There is increasing trend of OPD both at Primary and Secondary health care (SHC) levels
- Increasing trend at PHC level is a bit slower than SHC.
- Over all increase in OPD reflects confidence of the community in public health facilities.

Recommendation

- Focus and attention is required to improve health care services at PHC level.
- Momentum of improved services at SHC level needs to be sustained.
- Burden on health facilities will put pressure on logistics, in near future.
- Community awareness programs regarding the health care services provided at a specific level needs to be initiated utilizing electronic, print and social media.

Deliveries (Primary Level Health Care Facilities)

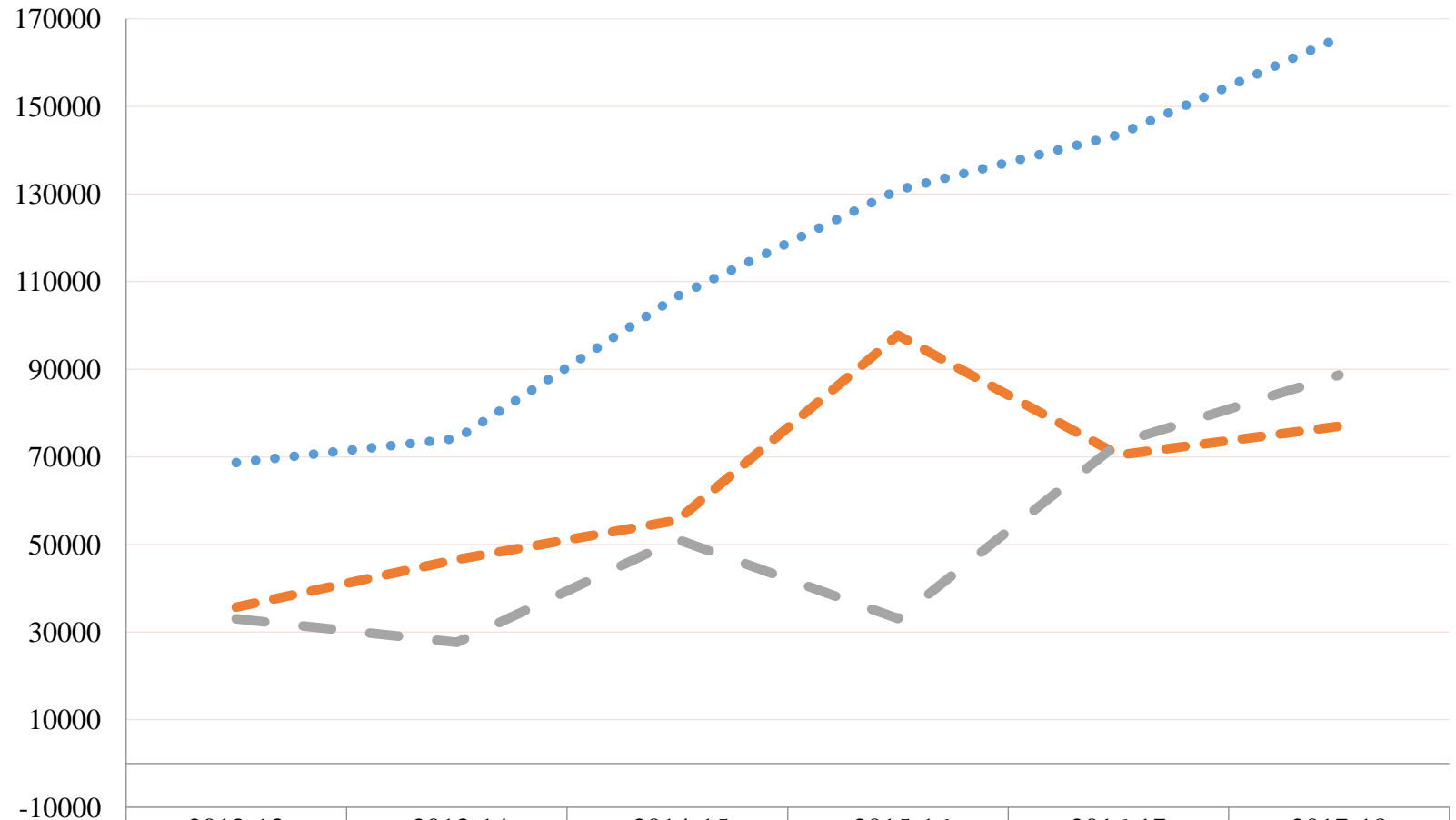
Interpretation:
Number of deliveries have decreased in primary public health facilities



Deliveries (Secondary Level Health Care Facilities)

Interpretation:

Number of deliveries have increased in secondary public health facilities



	2012-13	2013-14	2014-15	2015-16	2016-17	2017-18
•••• SHCs	68663	74201	106684	130890	143,555	165,669
— — — DHQs	35662	46543	55522	97790	70,390	76,998
— — — Other Secondary Hospitals	33001	27658	51162	33100	73,165	88,671

Analysis

- Downward trend of deliveries at Primary Health Care (PHC) level shows stagnancy and poor performance.
- Upward trend of deliveries at secondary health care (SHC) level (Hospitals) show efforts and good performance.
- Over all increase of deliveries in public health care facilities will ensure improved maternal and new born care resulting in reduced infant and maternal mortality rates thereby helping in the achievement of SDGs.

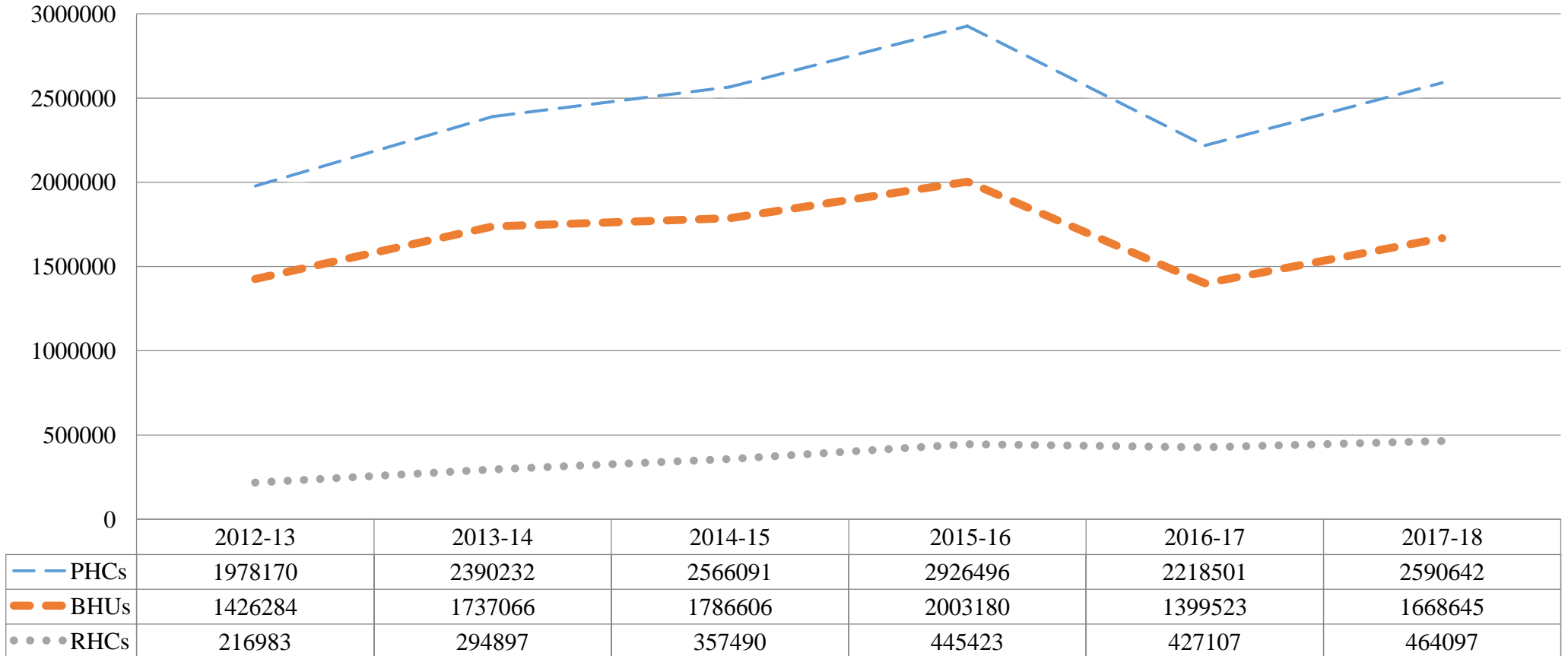
Recommendation

- Focus and attention is required to improve health care services at PHC level.
- Improved services at SHC level needs to be sustained.
- Referral and coordination services to/with tertiary health care facilities should be improved to deal with complicated labour cases, timely.

Communicable Diseases
(Primary and Secondary Level Health Care Facilities)

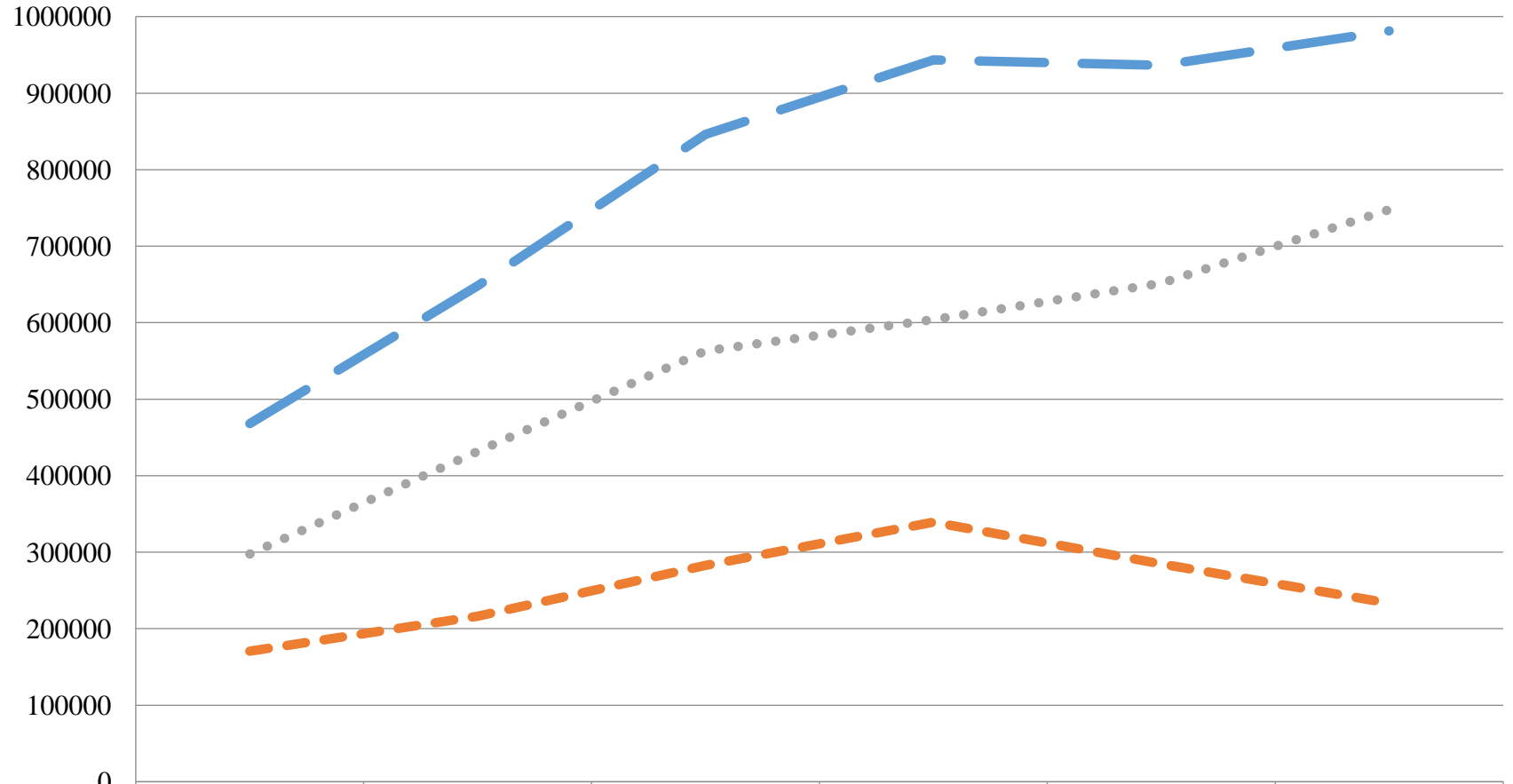
Acute (upper) Respiratory Infections (Primary Level Health Care Facilities)

Increased burden of patients demand increase in operational budget/medicine budget



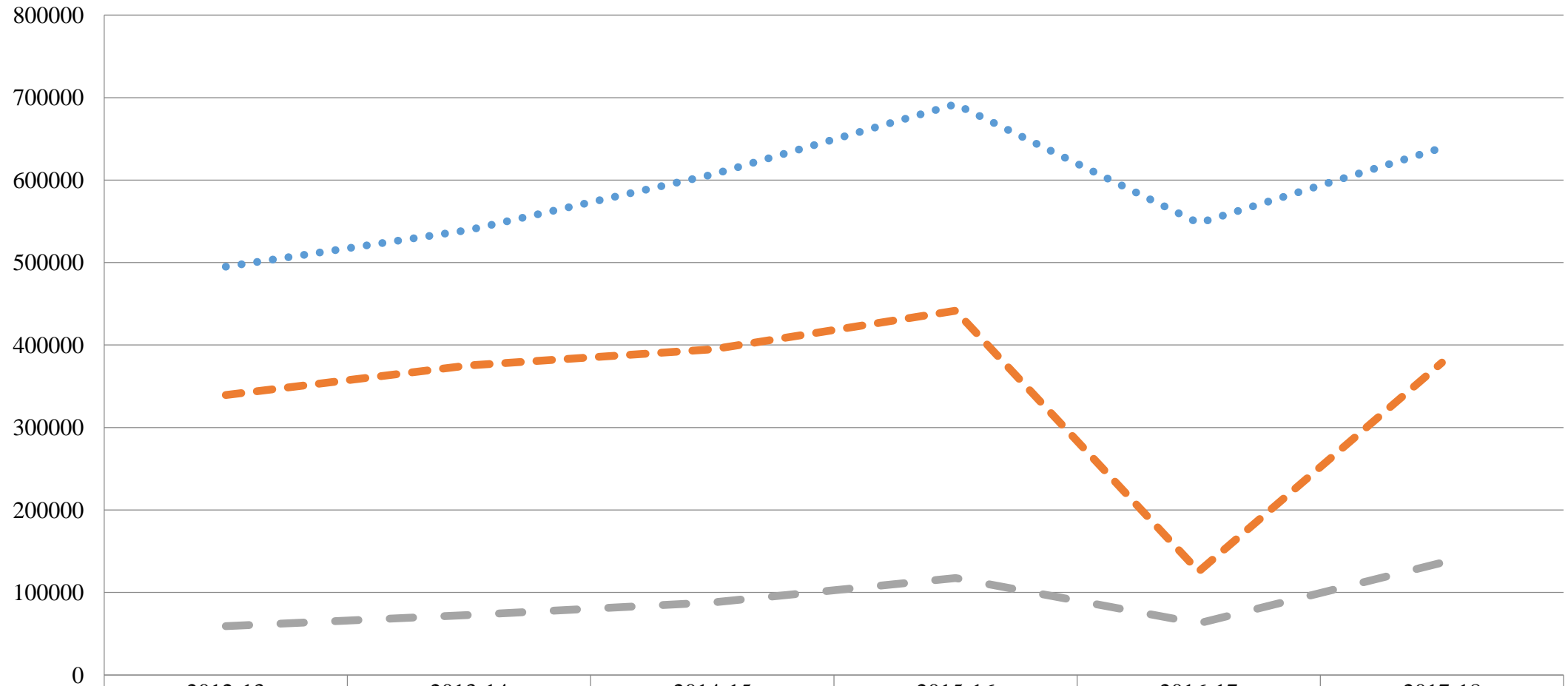
Acute (upper) Respiratory Infections (Secondary Level Health Care Facilities)

Burden of patients is more on SHCs as compared to PHCs



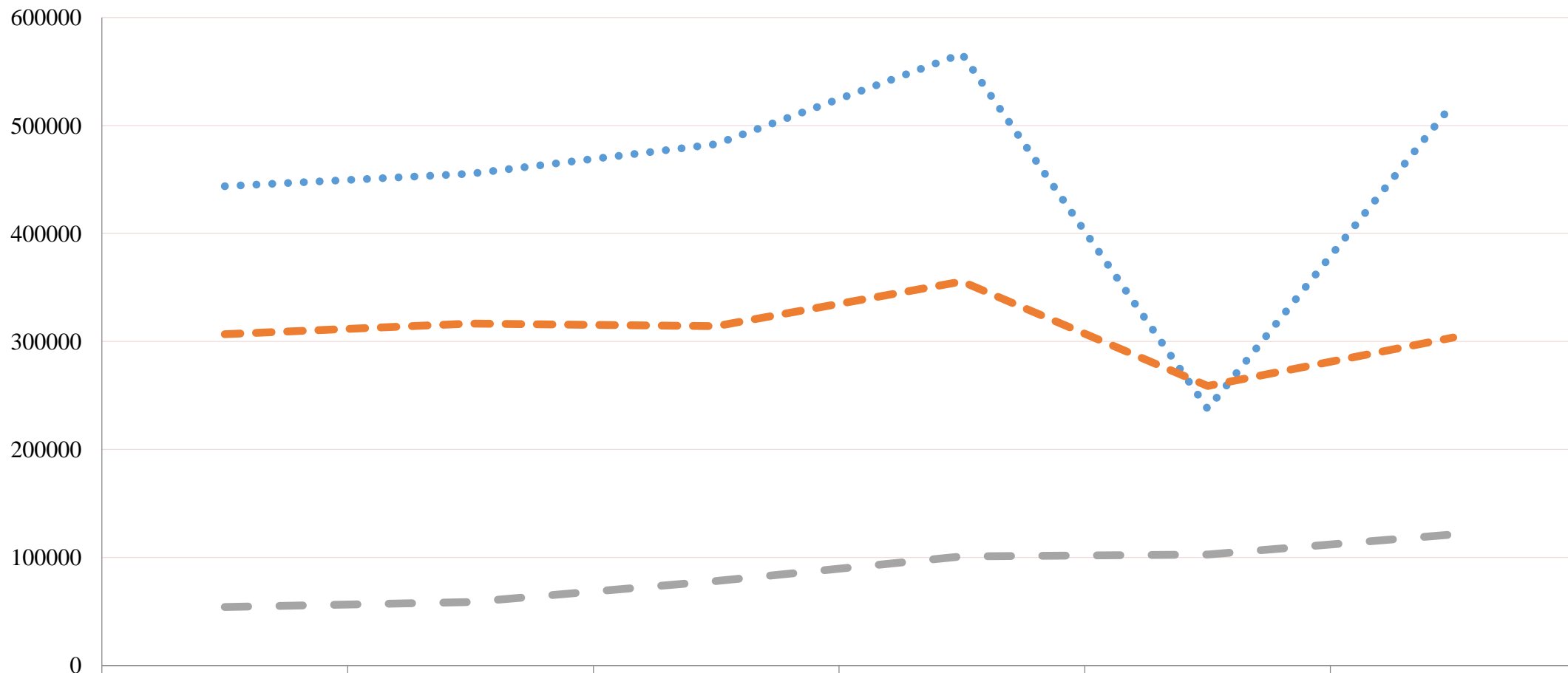
	2012-13	2013-14	2014-15	2015-16	2016-17	2017-18
SHCs	468188	648189	846119	943555	936292	981280
DHQs	170502	216321	282824	339374	284689	233439
Other Secondary Hospitals	297686	431868	563295	604181	651603	747841

Diarrhea/Dysentery < 5 years (Primary Level Health Care Facilities)



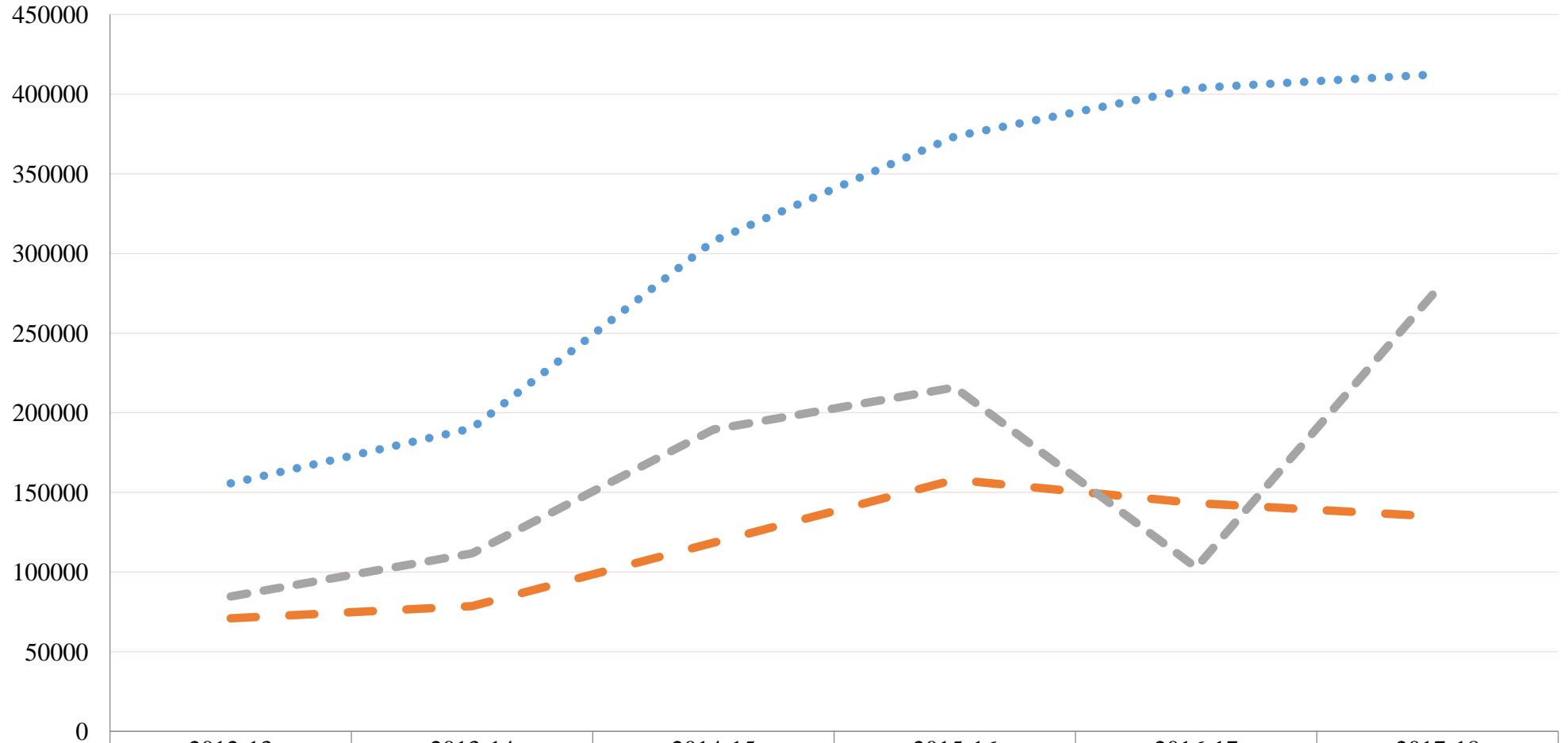
	2012-13	2013-14	2014-15	2015-16	2016-17	2017-18
●●● PHCs	494895	539409	606801	691949	547943	639252
— BHUs	339367	375335	394902	441571	125376	378647
— RHCs	59121	72796	87974	117330	62753	136138

Diarrhea/Dysentery >5 years (Primary Level Health Care Facilities)



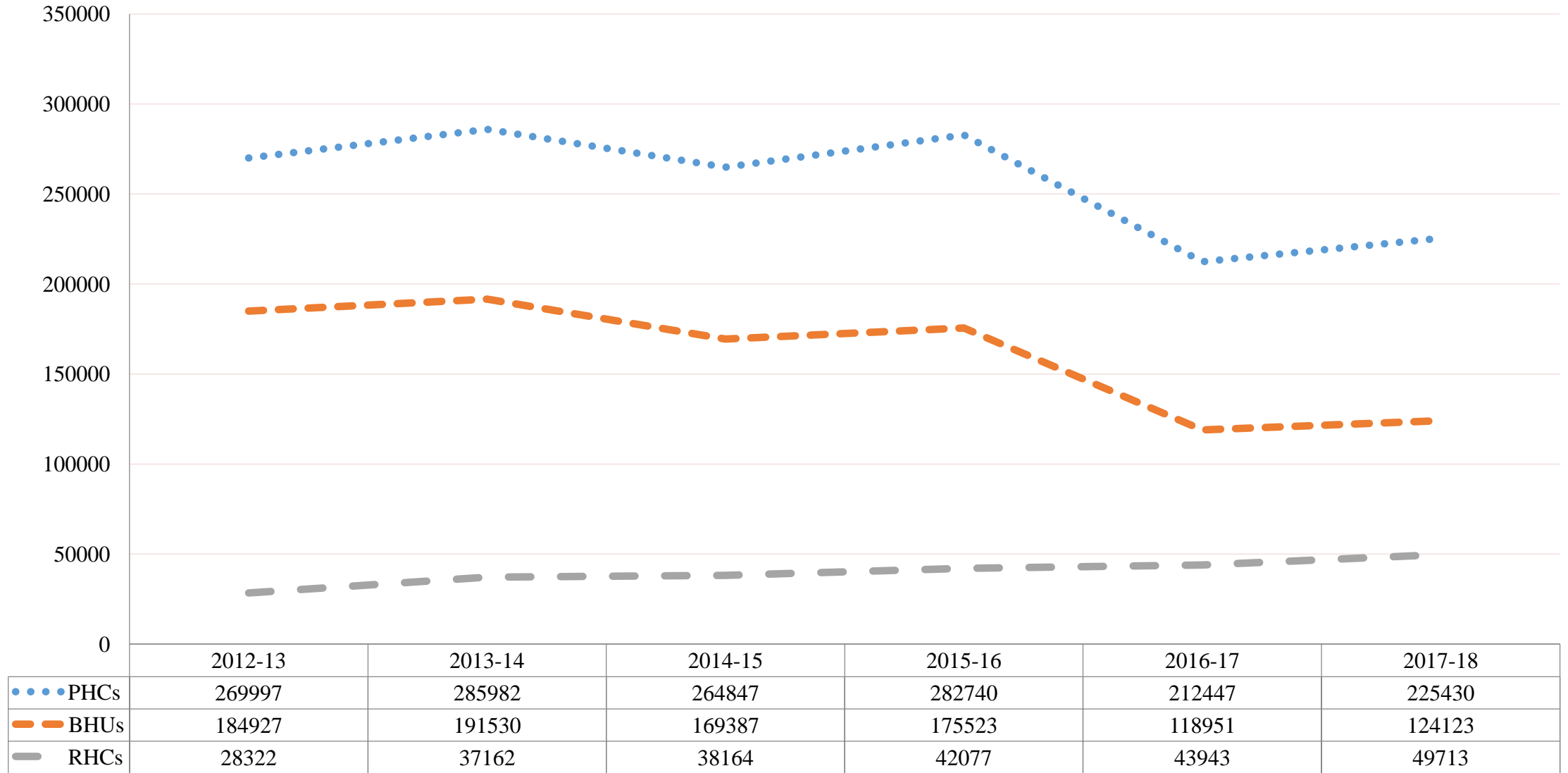
	2012-13	2013-14	2014-15	2015-16	2016-17	2017-18
●●● PHCs	443709	455408	482790	566375	237481	520670
— BHUs	306690	316615	314178	355442	258841	303755
— RHCs	54002	58741	78144	100880	102807	121214

Diarrhea/Dysentery >5 years (Secondary Level Health Care Facilities)

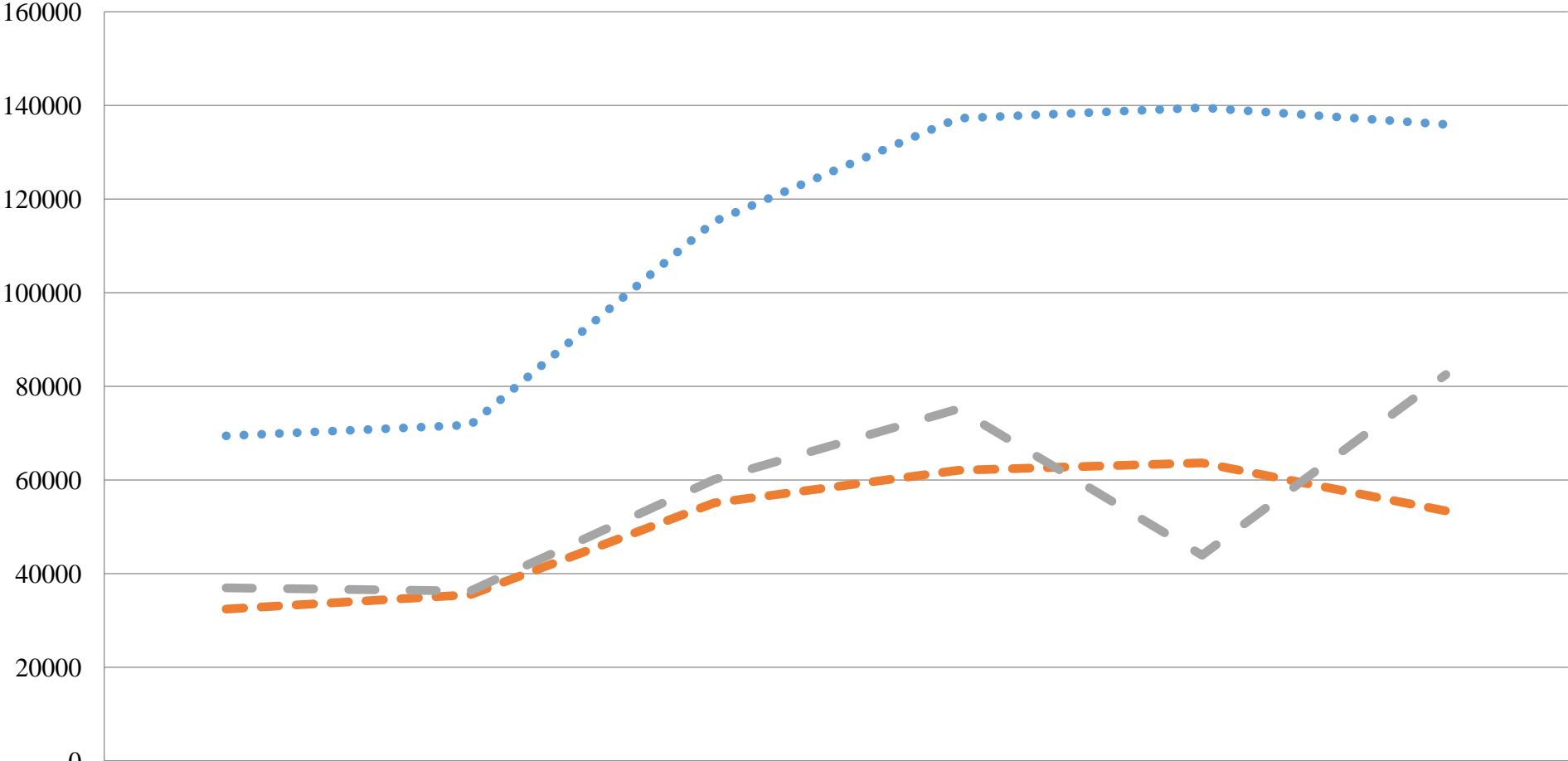


	2012-13	2013-14	2014-15	2015-16	2016-17	2017-18
SHCs	155631	190294	307919	373440	403923	412526
DHQs	70964	78647	118407	157850	143192	134842
Other Seconarcy Hospitals	84667	111647	189512	215860	102807	277684

Scabies (Primary Level Health Care Facilities)



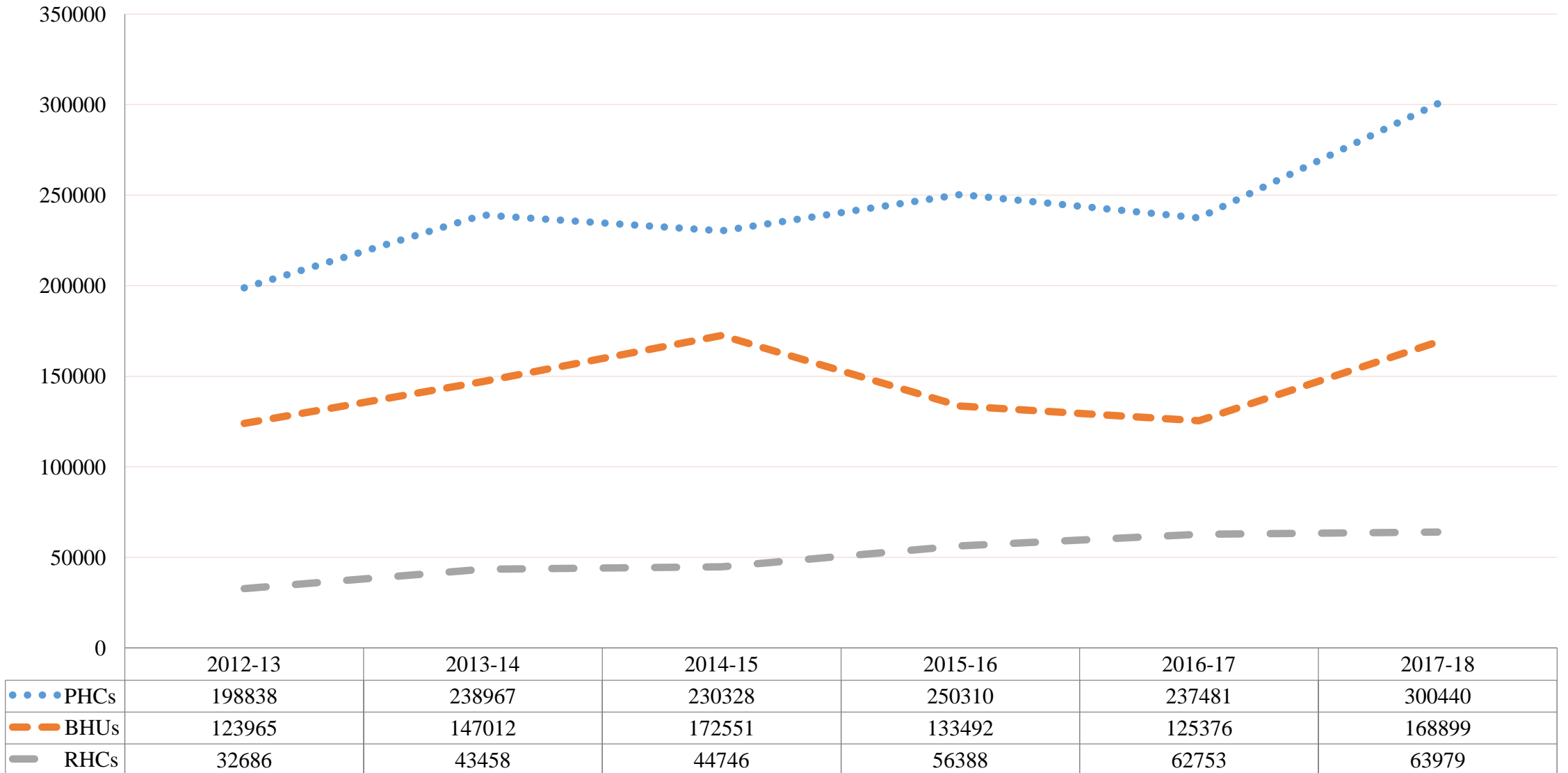
Scabies (Secondary Level Health Care Facilities)



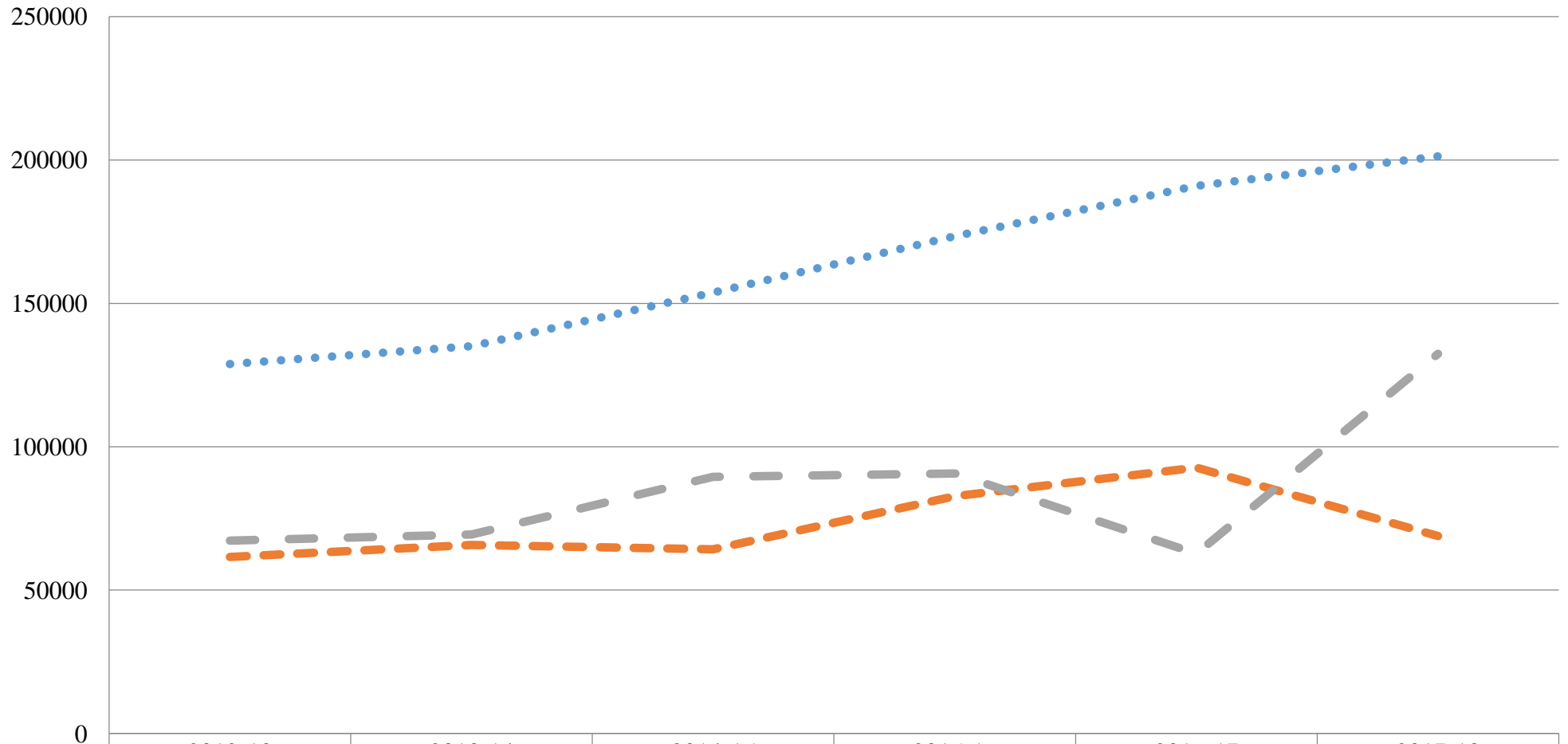
●●● SHCs
— DHQs
— Other Seconary Hospitals

2012-13	2013-14	2014-15	2015-16	2016-17	2017-18
69414	71775	115195	137230	139479	135928
32461	35475	55108	62087	63659	53387
36953	36300	60087	75143	43943	82541

Suspected Malaria (Primary Level Health Care Facilities)

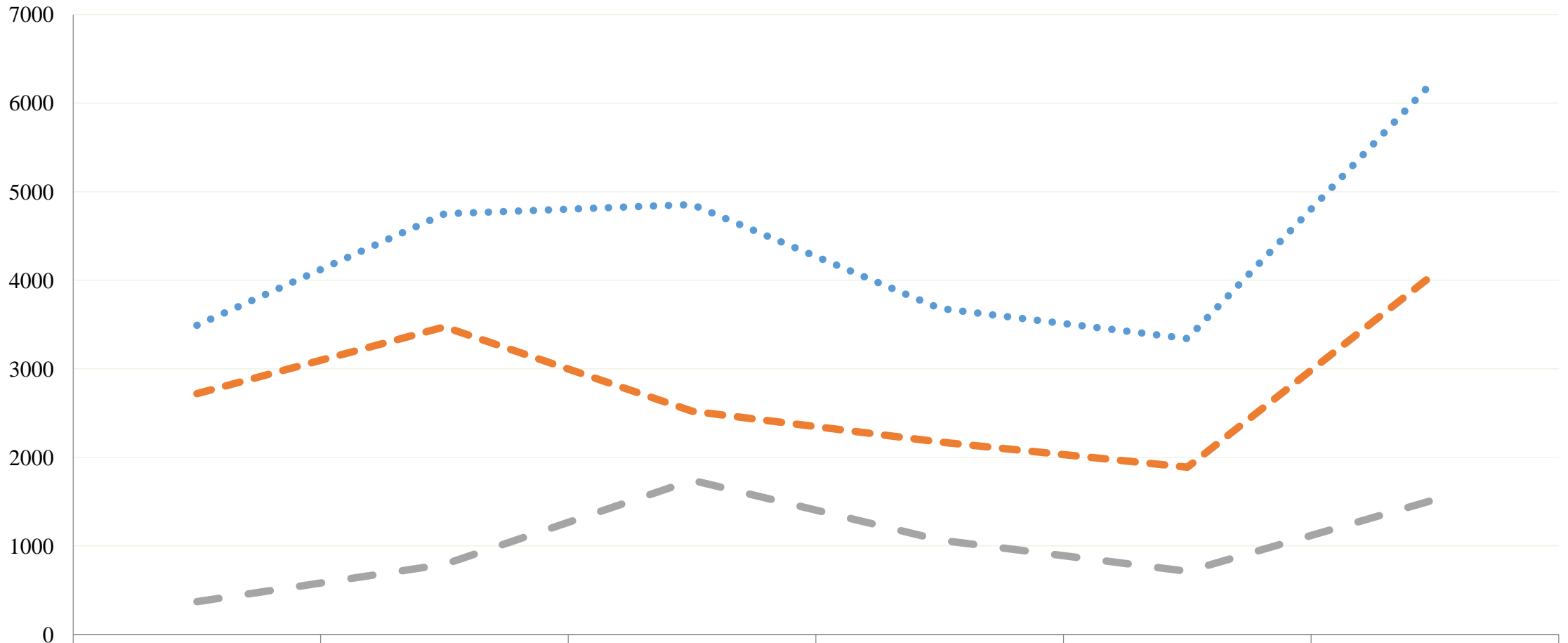


Suspected Malaria (Secondary Level Health Care Facilities)



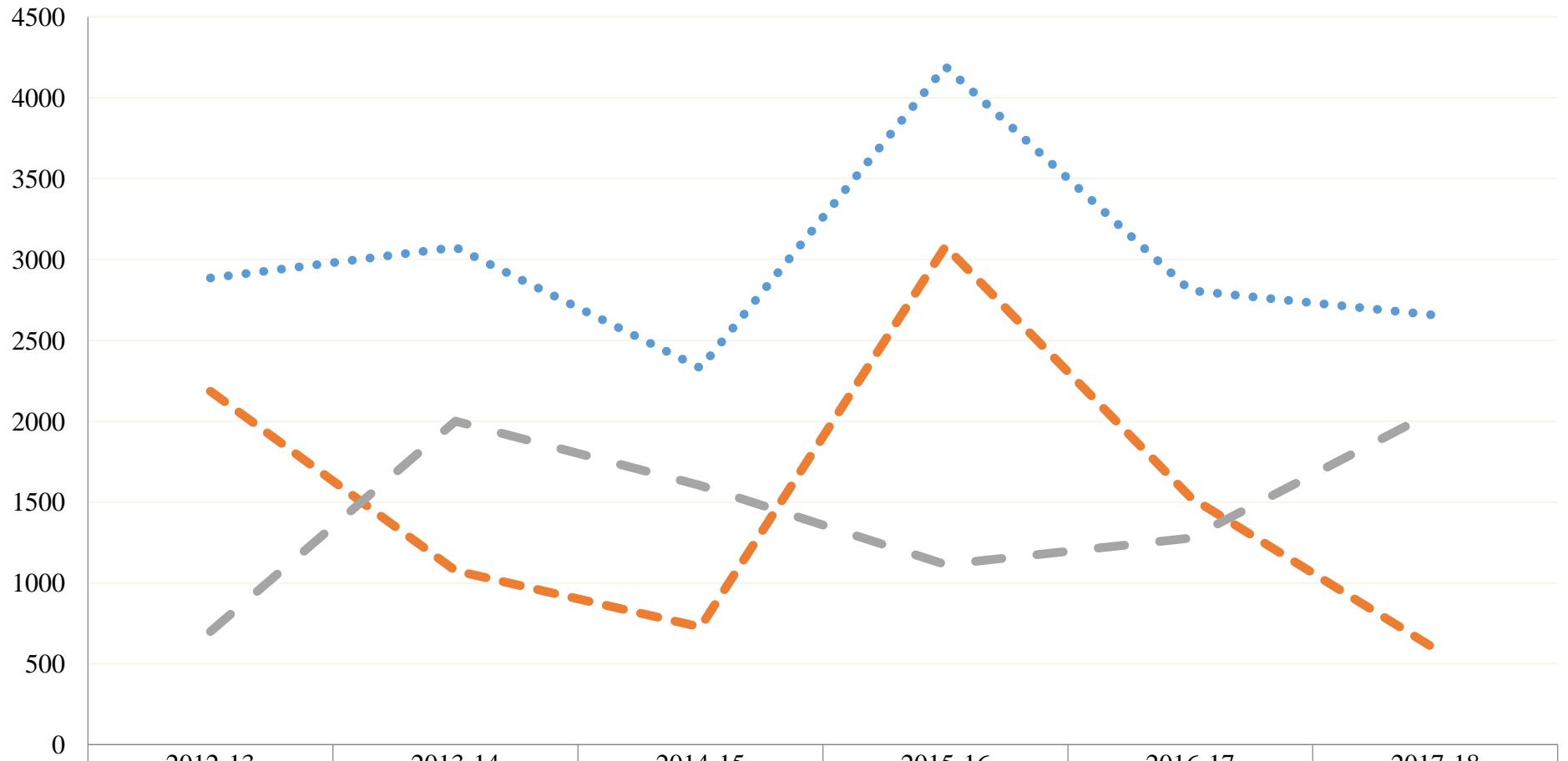
•••• SHCs	128840	135112	153725	173439	190974	201255
— DHQs	61594	65741	64206	82779	92708	68876
— Other Seconarcy Hospitals	67246	69371	89519	90660	62753	132379

Cutaneous Leishmaniasis (Primary Level Health Care Facilities)



	2012-13	2013-14	2014-15	2015-16	2016-17	2017-18
●●●● PHCs	3491	4752	4856	3681	3341	6267
— — — BHUs	2720	3474	2521	2174	1890	4081
— — — RHCs	371	791	1741	1066	712	1524

Cutaneous Leishmaniasis (Secondary Level Health Care Facilities)



	2012-13	2013-14	2014-15	2015-16	2016-17	2017-18
●●●● SHCs	2885	3076	2330	4194	2808	2656
— — — — DHQs	2185	1076	727	3080	1530	593
— — — — Other Secondary Hospitals	700	2000	1603	1114	1278	2063

Analysis

- There is overall increasing trend of communicable diseases at PHC and SHC levels.

FORECASTING OF REQUIRED MEDICINES IS POSSIBLE:

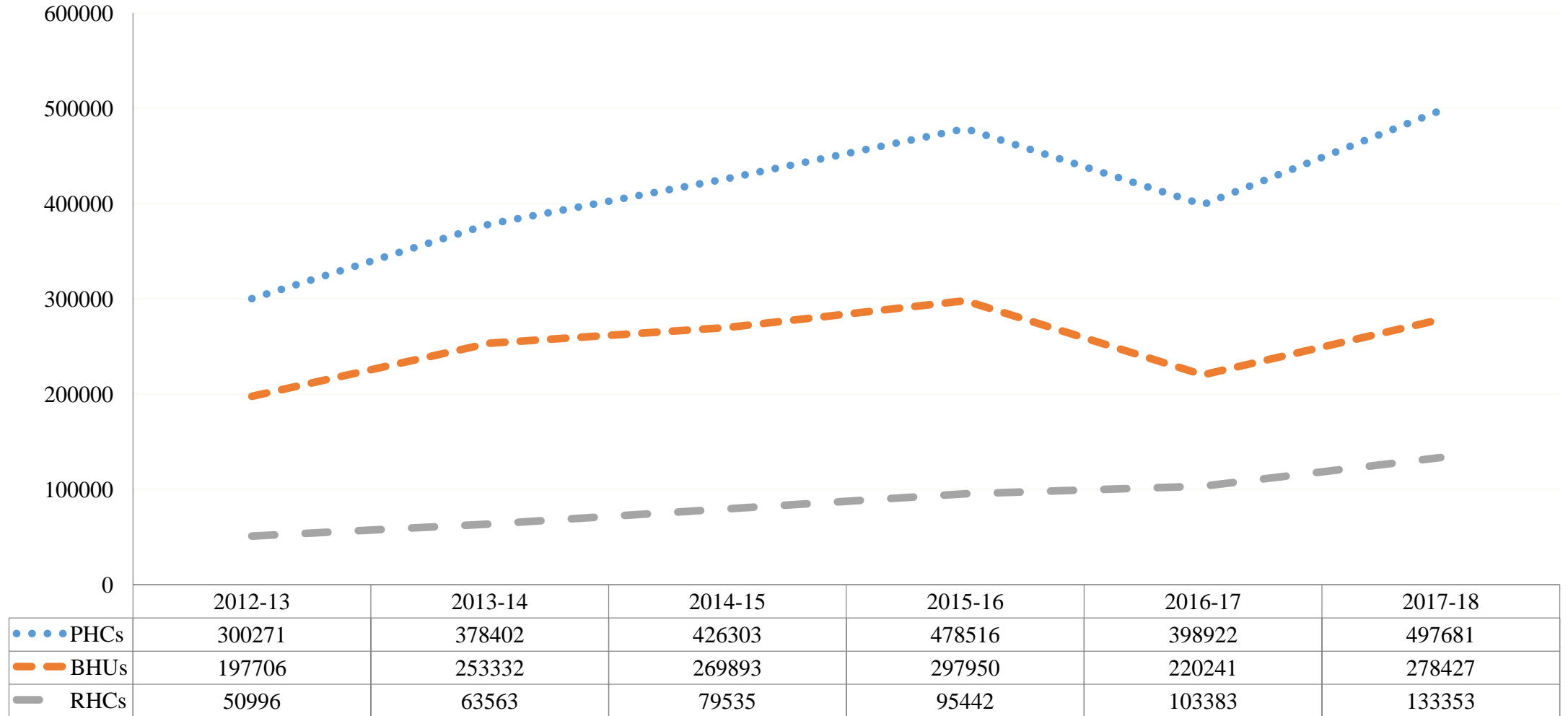
- District wise tabulated data indicates priority need of relevant districts with regards to the needed medicine hence forecasting the demand becomes possible.

Recommendation

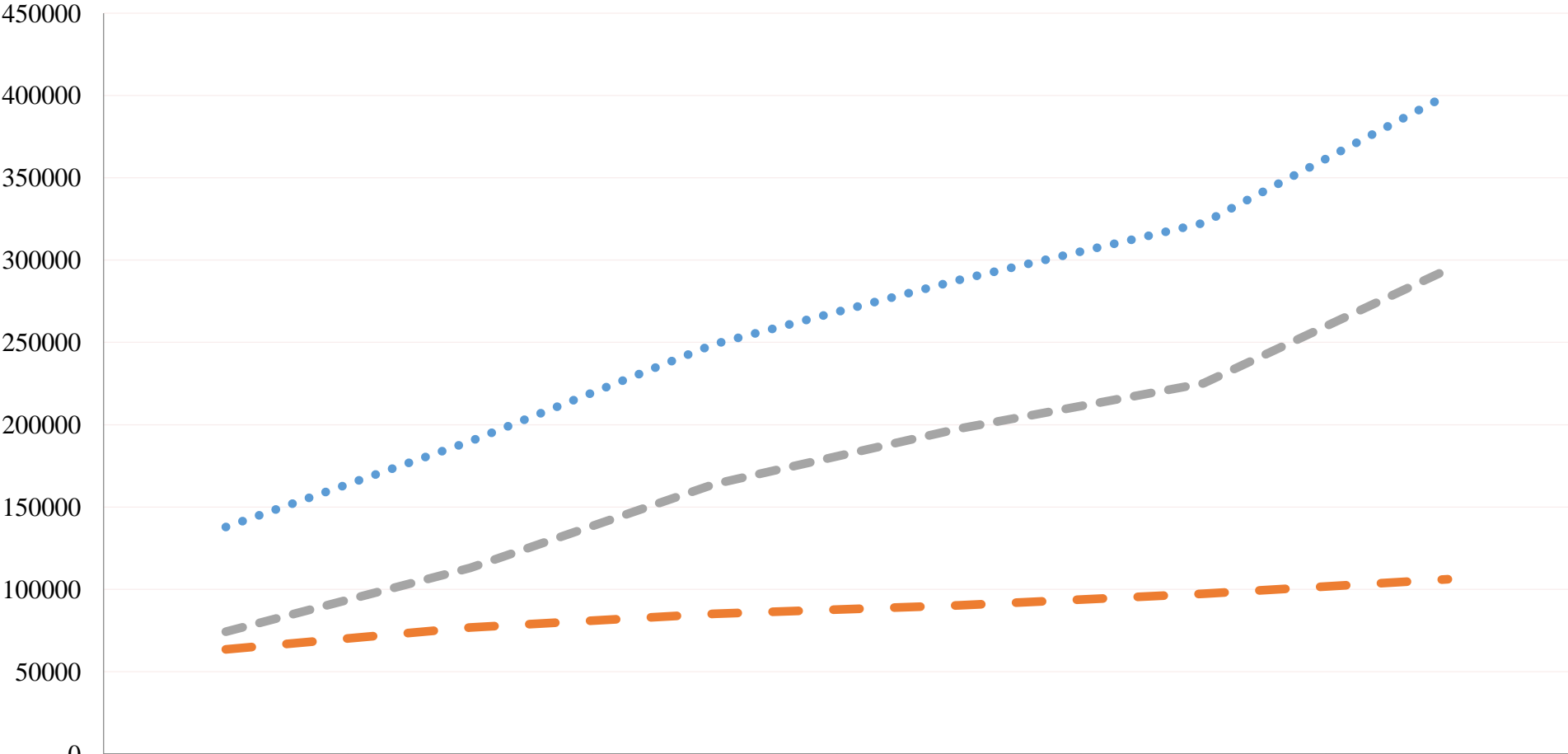
- Purchase of medicines should be done according to the disease trends of the districts. (in addition to intuition/experience)
- Preventive measures should be taken within the available resources.
- Multi-sectoral approach is obligatory to control communicable diseases eg improved sanitation, clean drinking water, good environment etc

**Non-Communicable Diseases
(Primary and Secondary Level Health Care Facilities)**

Urinary Tract Infections (Primary Level Health Care Facilities)

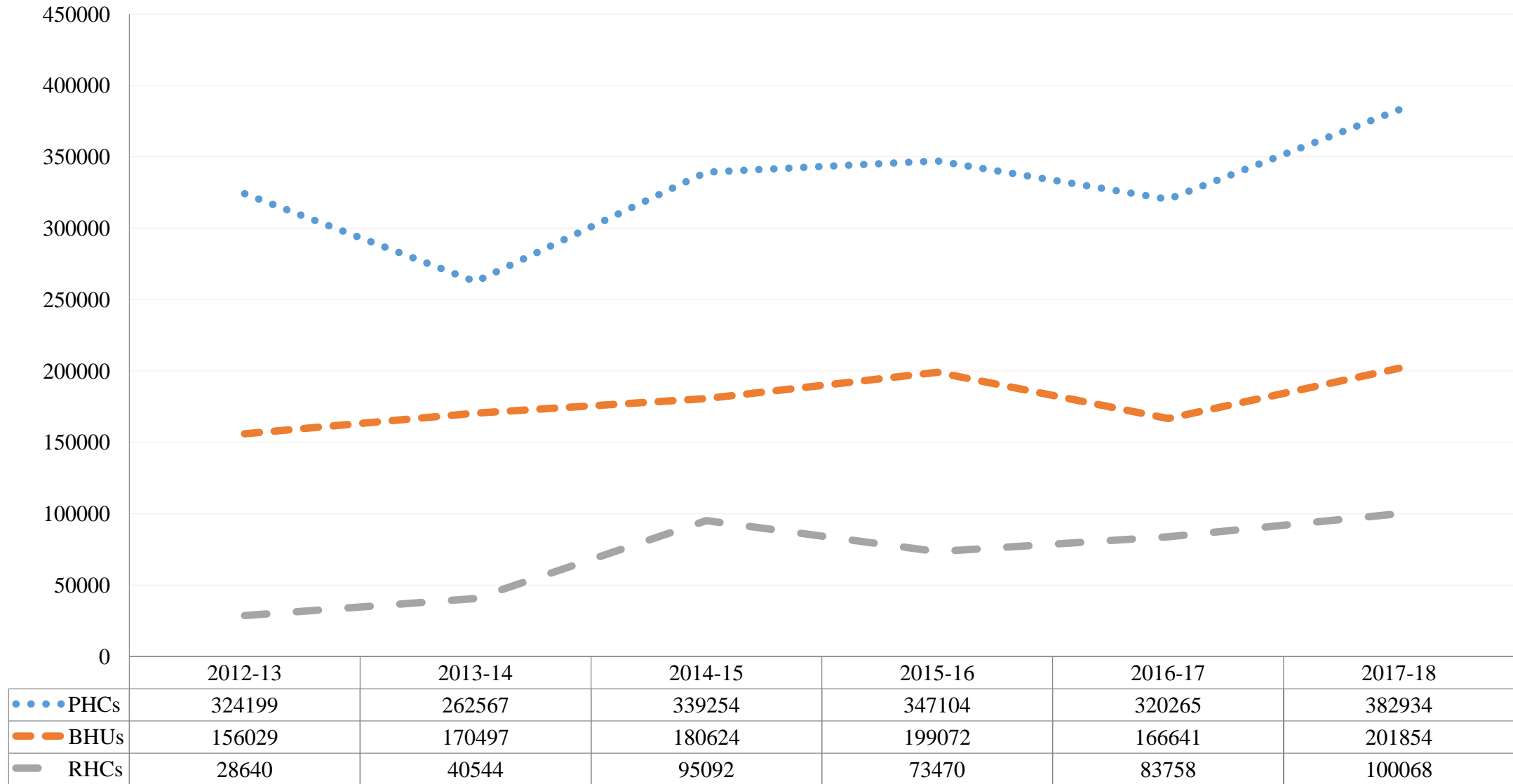


Urinary Tract Infections (Secondary Level Health Care Facilities)

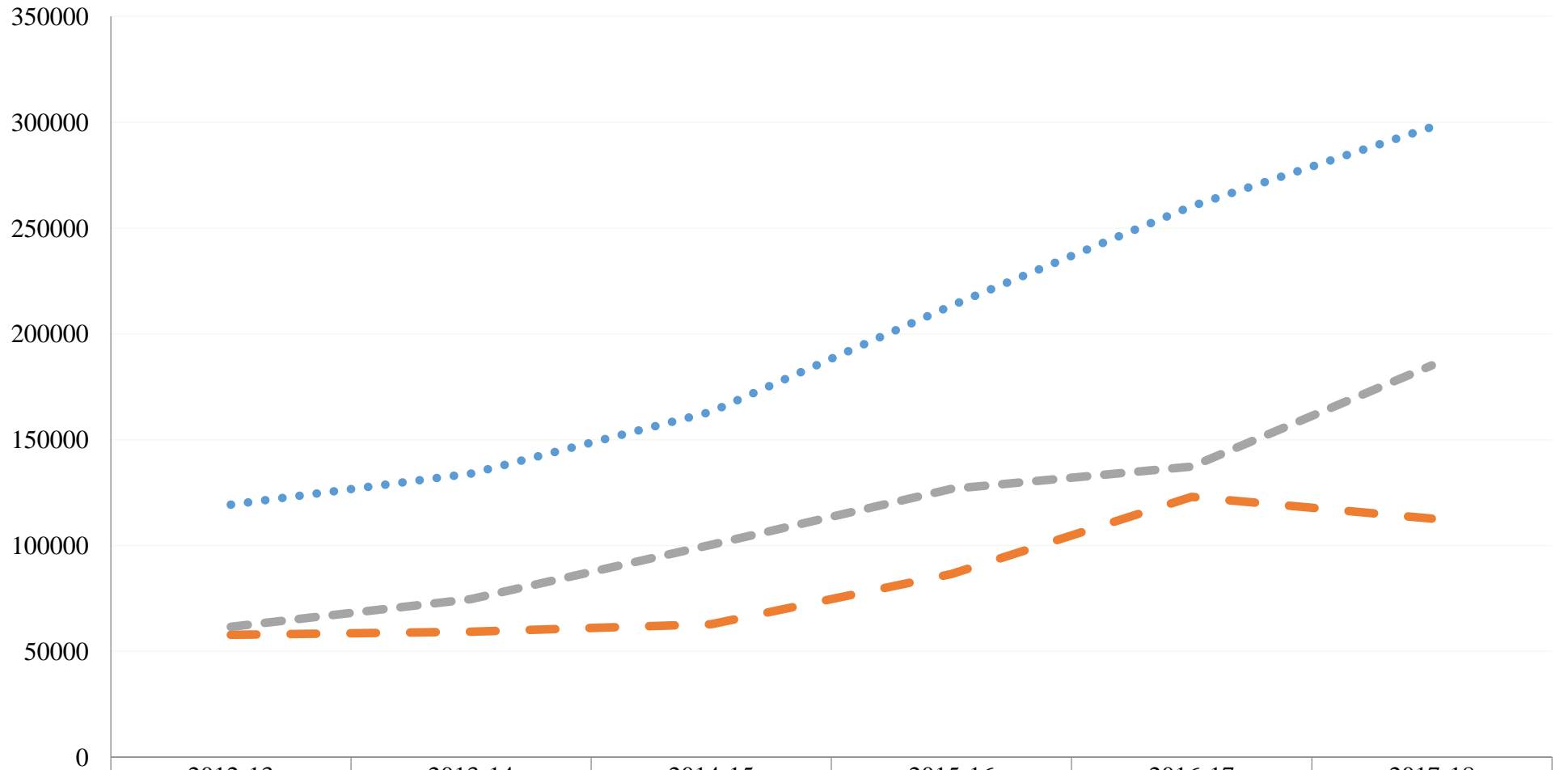


	2012-13	2013-14	2014-15	2015-16	2016-17	2017-18
●●● SHCs	137793	189870	249087	287911	322508	400463
— DHQs	63599	76775	85088	90302	97290	106165
— Other Secnary Hospitals	74194	113095	163999	197609	225218	294298

Hypertension (Primary Level Health Care Facilities)

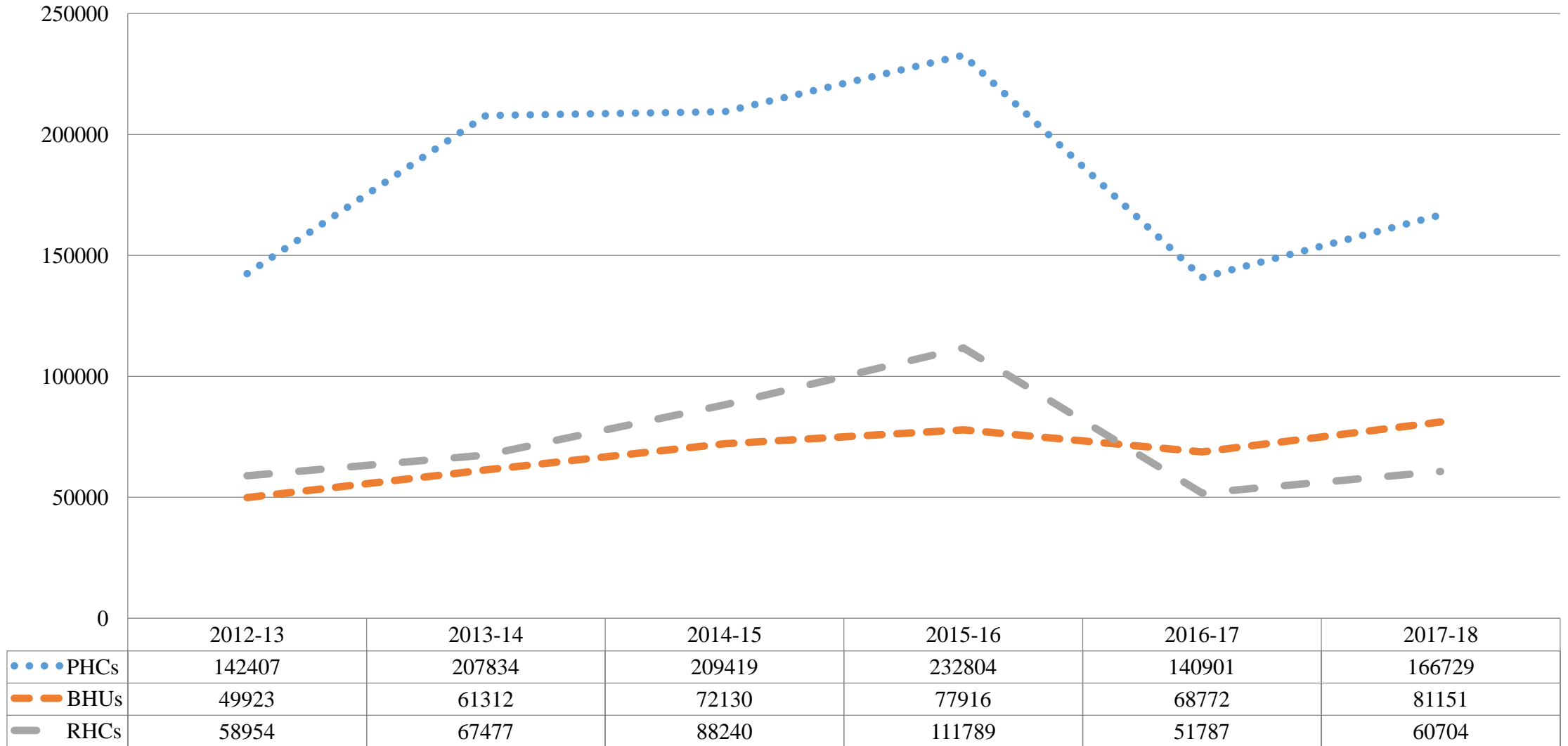


Hypertension (Secondary Level Health Care Facilities)

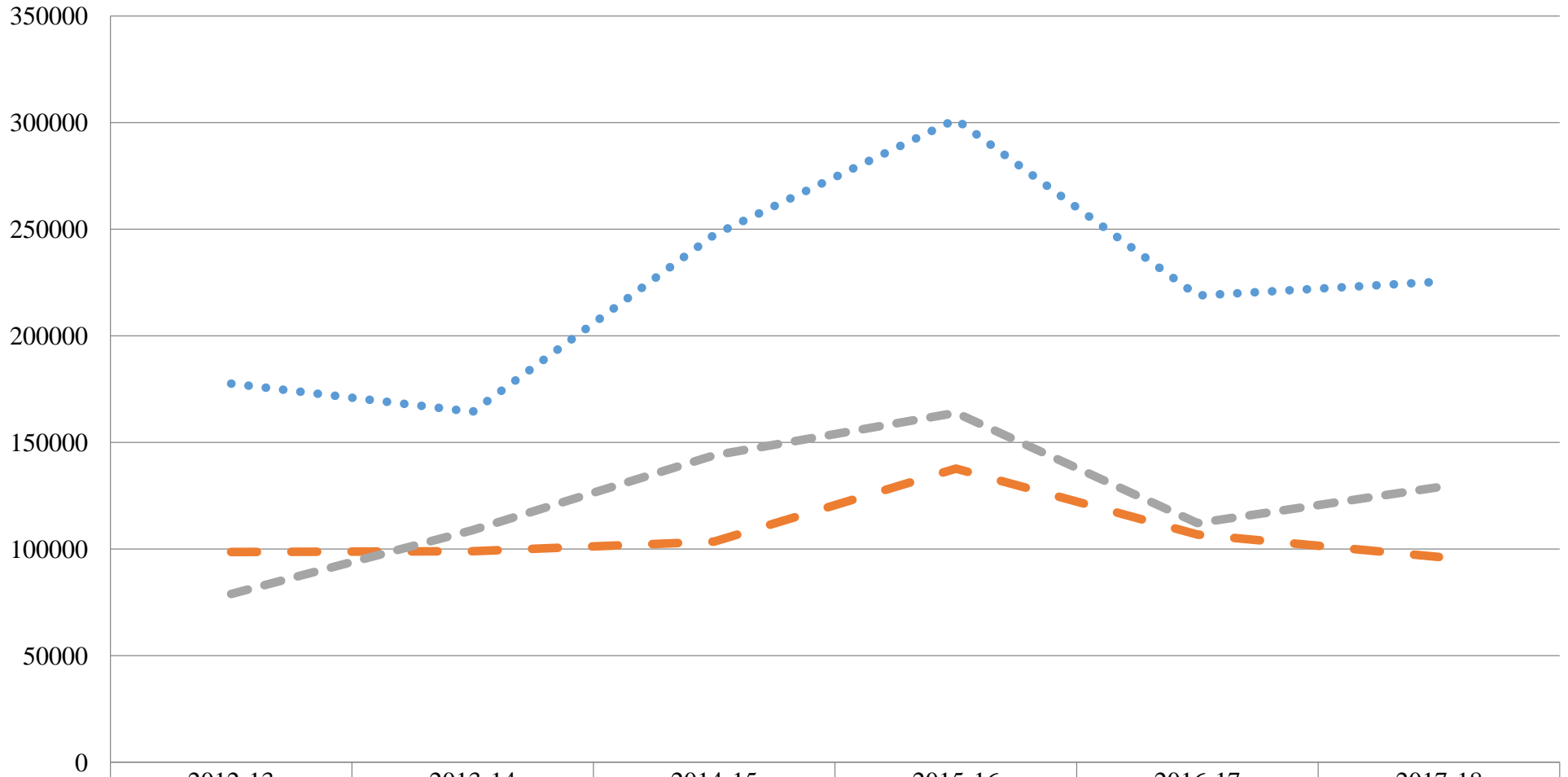


	2012-13	2013-14	2014-15	2015-16	2016-17	2017-18
SHCs	119379	133993	163184	213400	260276	297772
DHQs	57765	59294	62789	86605	123024	112669
Other Secondary Hospitals	61614	74699	100395	126795	137252	185103

Diabetes Mellitus (Primary Level Health Care Facilities)

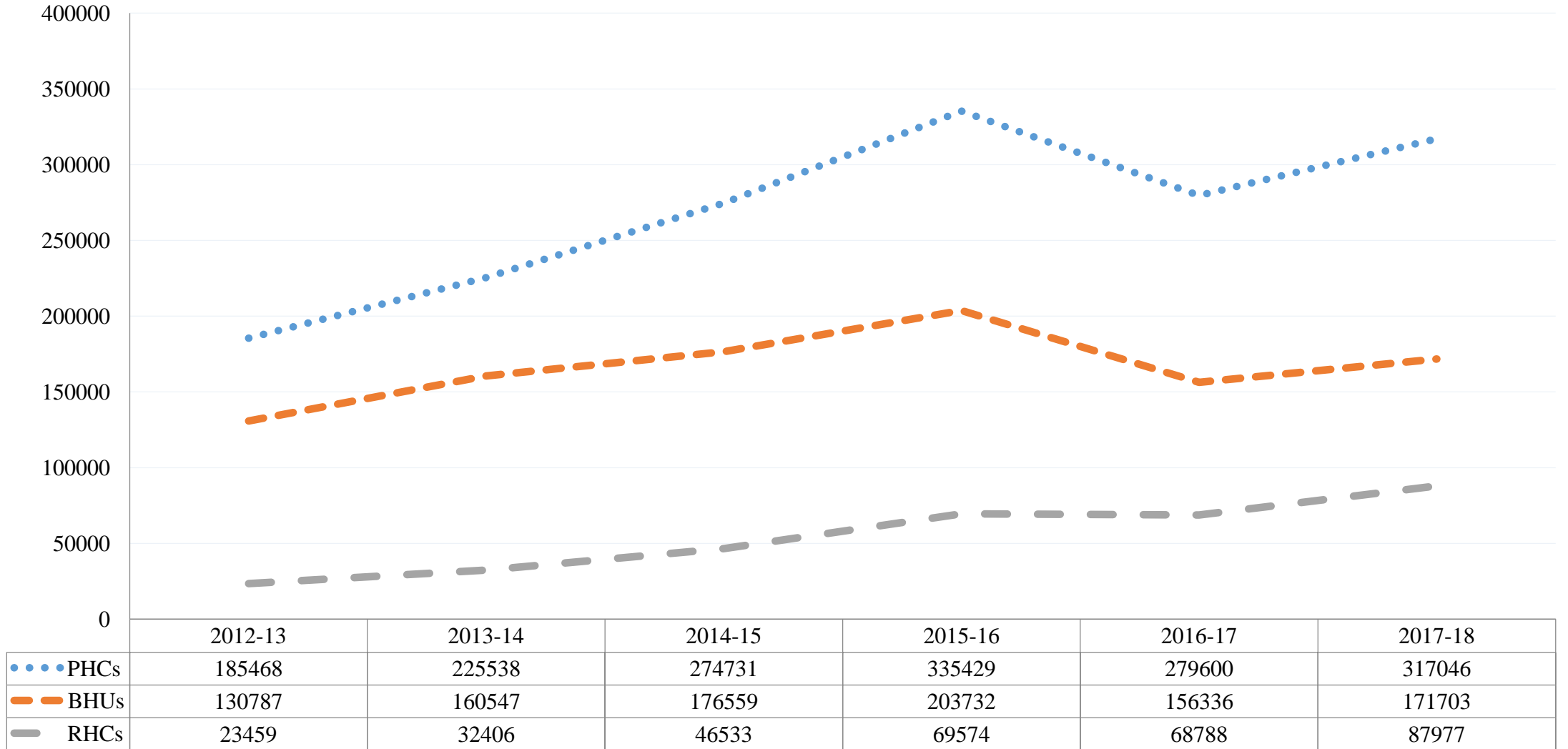


Diabetes Mellitus (Secondary Level Health Care Facilities)

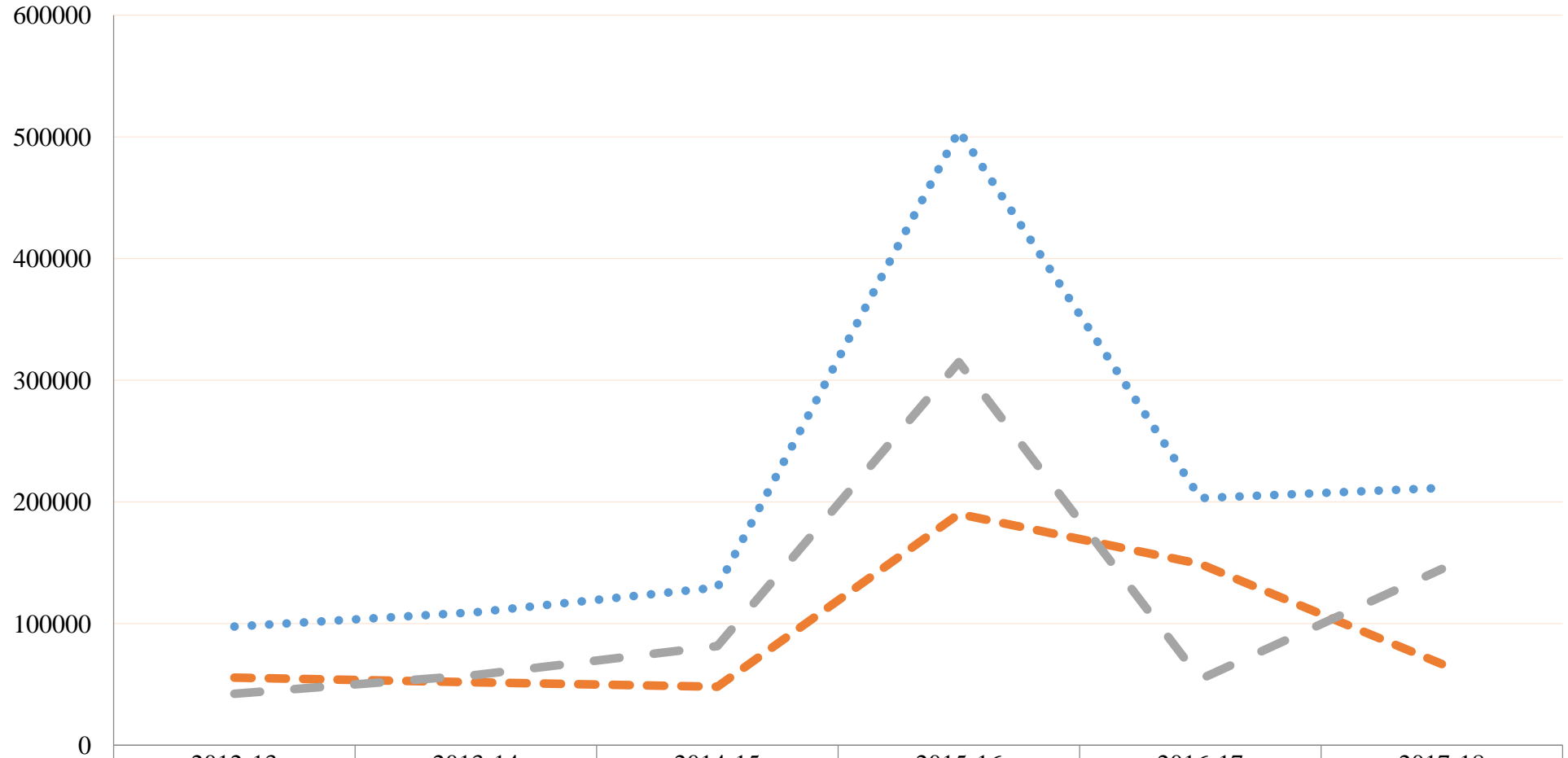


	2012-13	2013-14	2014-15	2015-16	2016-17	2017-18
SHCs	177549	164383	247446	301601	218945	225404
DHQs	98632	99009	103496	137760	106779	96309
Other Secondary Hospitals	78917	108828	143950	163841	112166	129095

Peptic Ulcer Diseases (Primary Level Health Care Facilities)

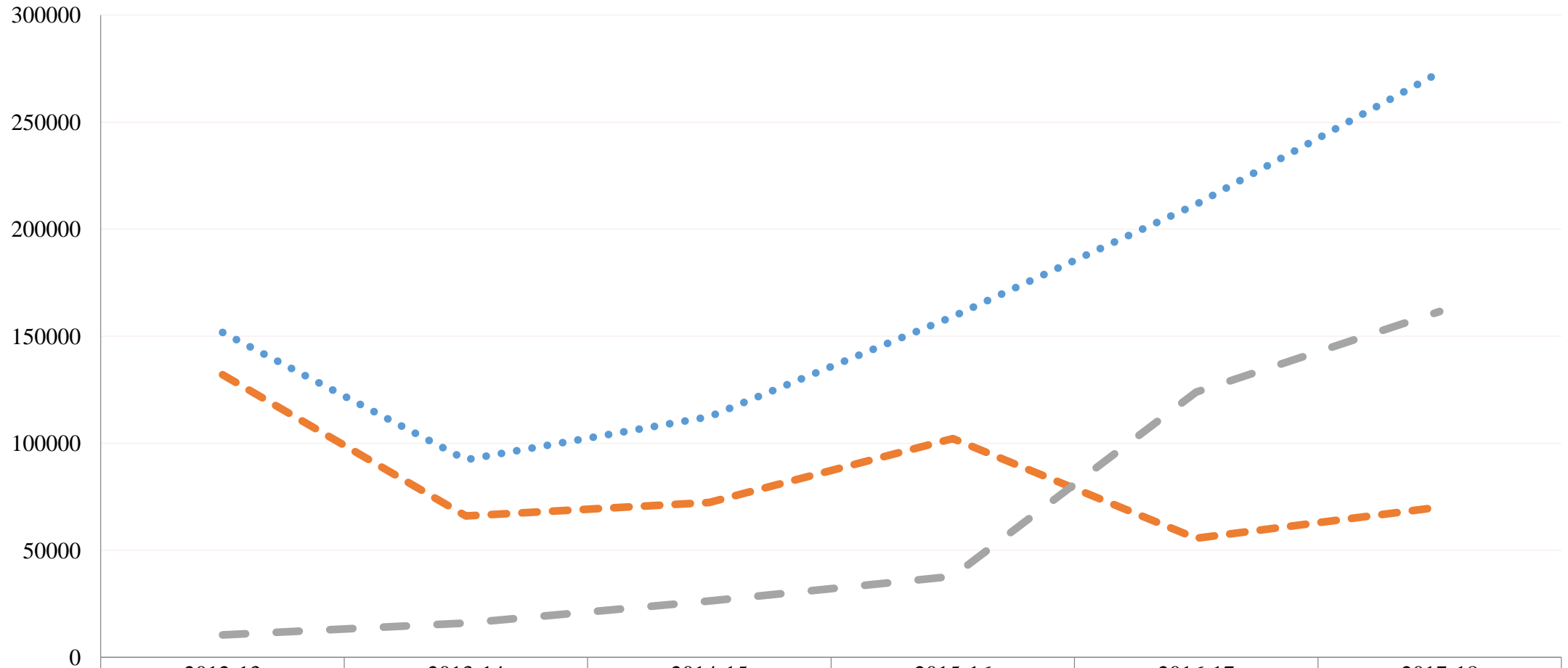


Peptic Ulcer Diseases (Secondary Level Health Care Facilities)



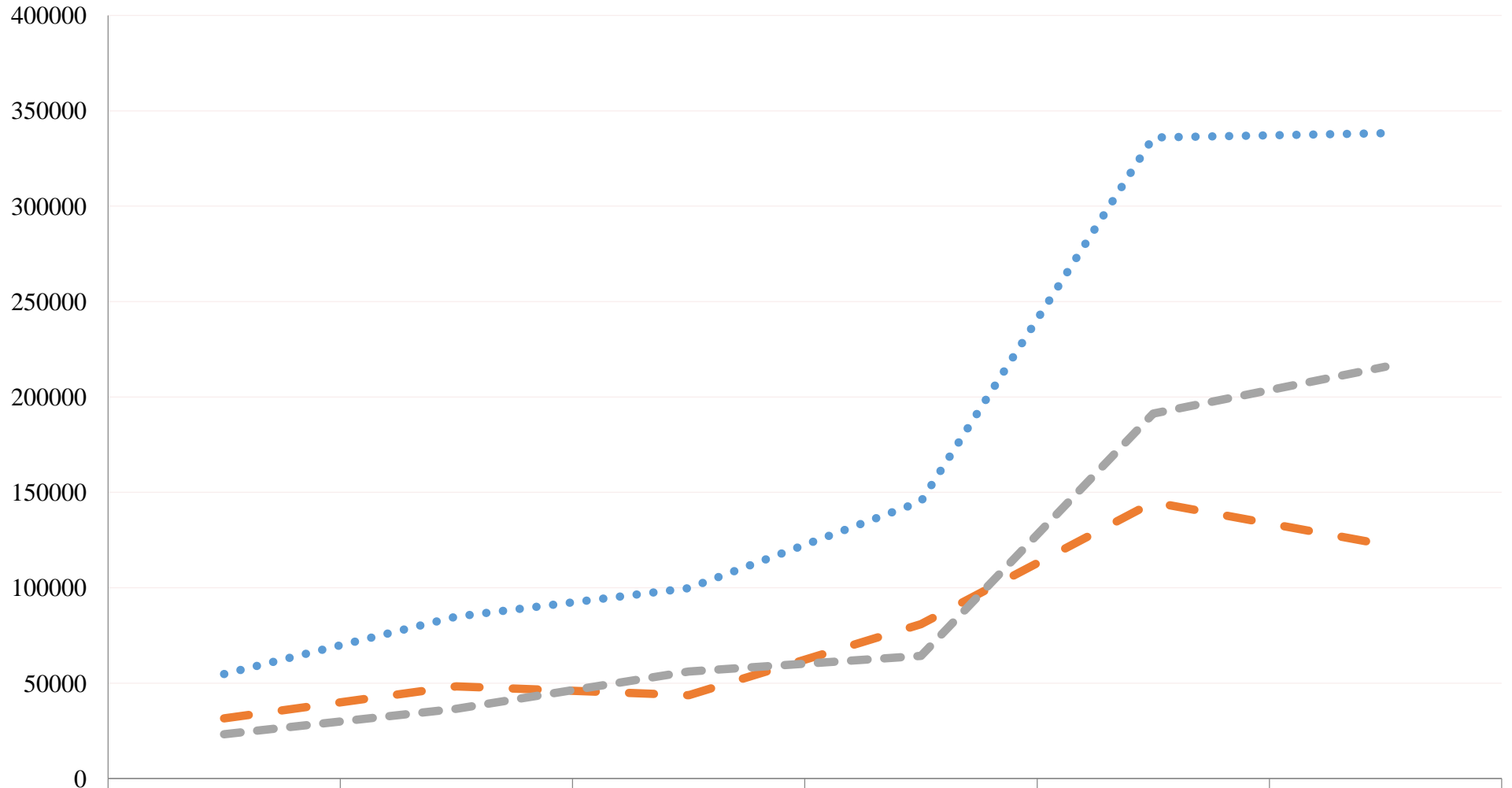
•••• SHCs	2012-13	2013-14	2014-15	2015-16	2016-17	2017-18
— — — — DHQs	97471	109297	129627	504947	203053	211519
— — — — Other Secondary Hospitals	55488	51736	48124	190083	148839	66613
	42253	57561	81503	314864	54214	144906

Dental Caries (Primary Level Health Care Facilities)



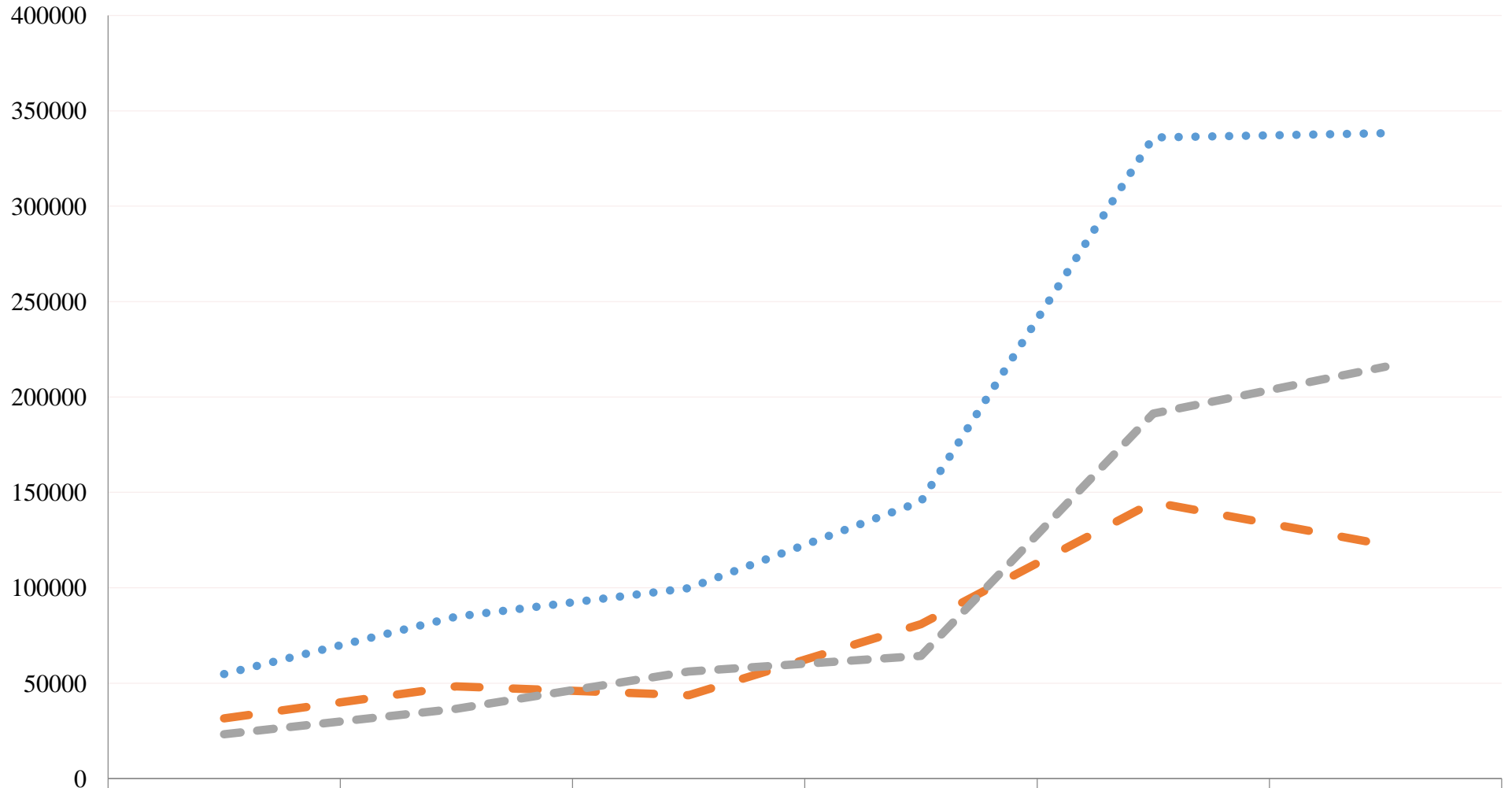
●●●● PHCs	151794	92336	112356	159143	211574	273300
—— BHUs	132050	66035	72370	102139	55649	70124
—— RHCs	10394	16014	26288	37762	123938	161568

Dental Caries (Secondary Level Health Care Facilities)



	2012-13	2013-14	2014-15	2015-16	2016-17	2017-18
●●● SHCs	54759	84832	99793	145169	336038	338244
— DHQs	31576	48301	43662	80883	144796	122441
— Other Secondary Hospitals	23183	36531	56131	64286	191242	215803

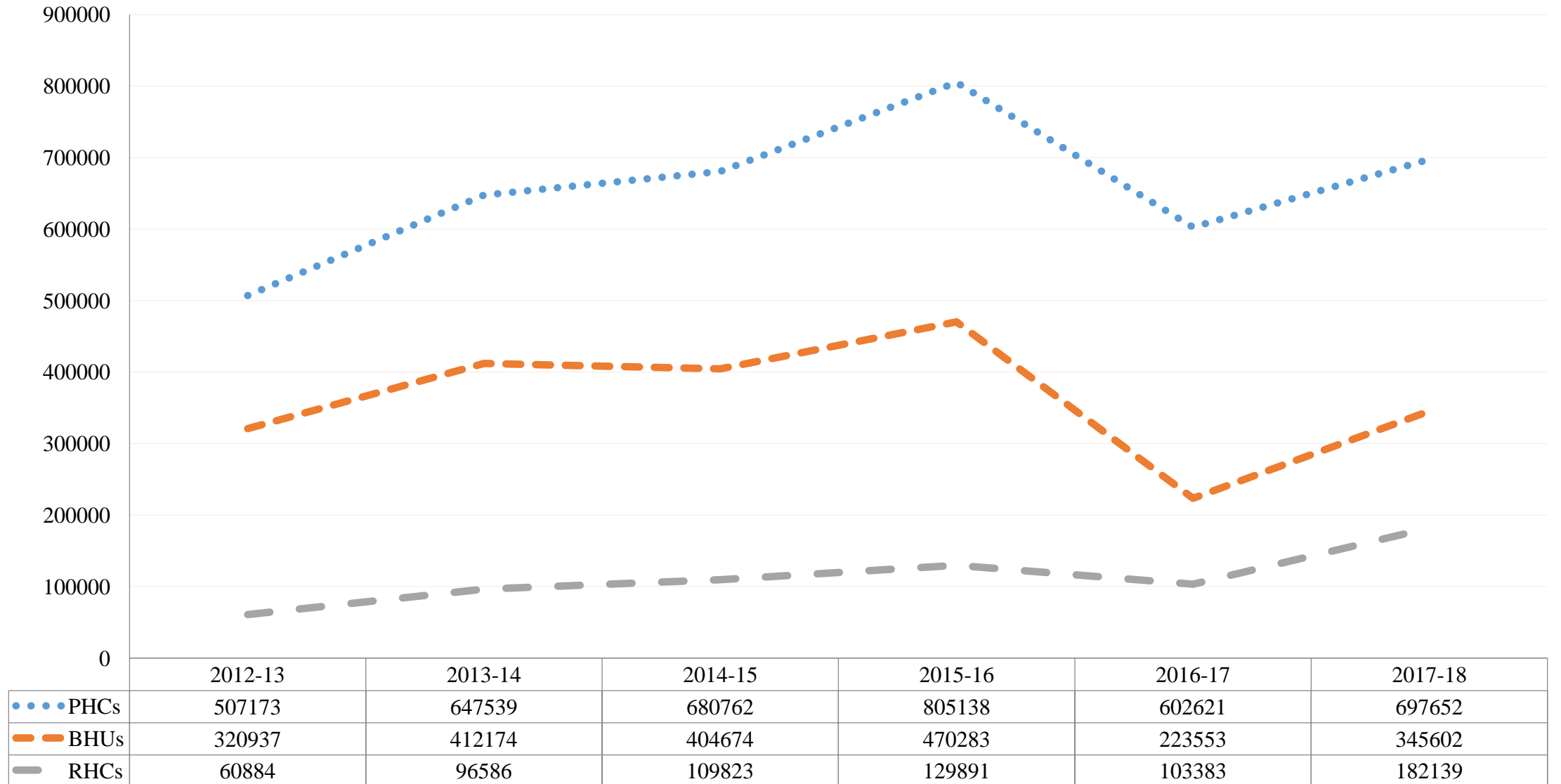
Dental Caries (Secondary Level Health Care Facilities)



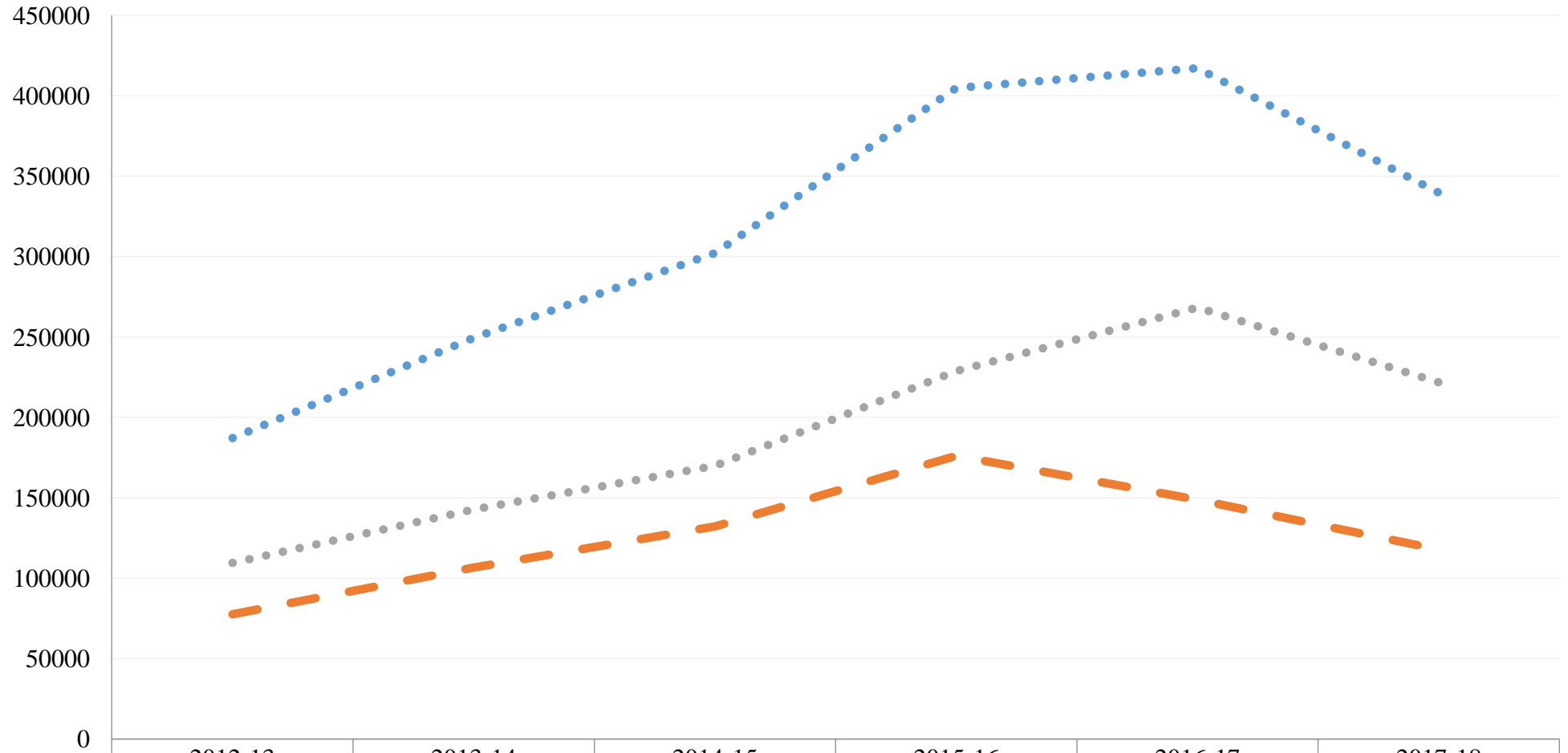
●●● SHCs
— DHQs
— Other Secondary Hospitals

	2012-13	2013-14	2014-15	2015-16	2016-17	2017-18
SHCs	54759	84832	99793	145169	336038	338244
DHQs	31576	48301	43662	80883	144796	122441
Other Secondary Hospitals	23183	36531	56131	64286	191242	215803

Fever Due to other causes (Primary Level Health Care Facilities)



Fever Due to other causes (Secondary Level Health Care Facilities)



	2012-13	2013-14	2014-15	2015-16	2016-17	2017-18
●●●● SHCs	187104	249412	302152	404947	417227	339826
— DHQs	77523	106590	132200	176083	148839	117903
●●●● Other Seconary Hospitals	109581	142822	169952	228864	268388	221923

Analysis

- Khyber Pakhtunkhwa is facing double burden of disease (both communicable and non-communicable disease are on the rise)
- Cardiovascular diseases, Peptic Ulcer, dental caries and Diabetes are especially on the rise

Recommendation

Preventive:

- Projects may be designed to run awareness campaigns in the community regarding steps to prevent non communicable diseases and promote health.
- Partners of health department can also play pivotal role.
- Links between the department and Khyber Medical University/other institutions could be established for joint efforts in the community.

Curative:

- Districts should manage human resource and logistics according to disease burden

Good governance:

- Increased burden of diseases demand increase in budget reciprocally with regards to operational budget. Logistics, medicines etc. (HR gaps are filled)